

## Product datasheet for **TA358754**

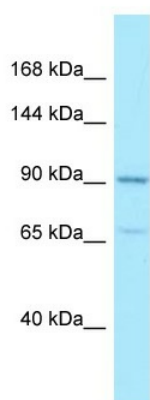
### AMPD2 Rabbit Polyclonal Antibody

#### Product data:

Product Type:	Primary Antibodies
Applications:	WB
Reactivity:	Human
Host:	Rabbit
Clonality:	Polyclonal
Specificity:	<b>Expected reactivity:</b> Cow, Dog, Guinea Pig, Horse, Human, Mouse, Rabbit, Rat <b>Homology:</b> Cow: 85%; Dog: 86%; Guinea Pig: 93%; Horse: 93%; Human: 100%; Mouse: 92%; Rabbit: 93%; Rat: 100%
Formulation:	Liquid. Purified antibody supplied in 1x PBS buffer with 0.09% (w/v) sodium azide and 2% sucrose. <i>Note that this product is shipped as lyophilized powder to China customers.</i>
Concentration:	lot specific
Purification:	Affinity Purified
Conjugation:	Unconjugated
Storage:	For short term use, store at 2-8°C up to 1 week. For long term storage, store at -20°C in small aliquots to prevent freeze-thaw cycles.
Stability:	Shelf life: one year from despatch.
Predicted Protein Size:	92kDa
Gene Name:	adenosine monophosphate deaminase 2
Database Link:	<a href="#">NP_631895</a> <a href="#">Entrez Gene 271 Human</a> <a href="#">Q01433-2</a>
Background:	Adenosine monophosphate deaminase-2 (EC 3.5.4.6) catalyzes the deamination of AMP to IMP and plays an important role in the purine nucleotide cycle.
Synonyms:	OTTHUMP00000013371
Protein Families:	Druggable Genome
Protein Pathways:	Metabolic pathways, Purine metabolism



[View online »](#)

**Product images:**

WB Suggested Anti-AMPD2 Antibody  
Titration: 1.0 ug/ml  
Positive Control: Hela Whole Cell  
AMPD2 is supported by BioGPS gene expression data to be expressed in Hela