

Product datasheet for **TA358752**

Sortilin (SORT1) Rabbit Polyclonal Antibody

Product data:

Product Type:	Primary Antibodies
Applications:	IHC, WB
Reactivity:	Human
Host:	Rabbit
Clonality:	Polyclonal
Specificity:	Expected reactivity: Cow, Dog, Guinea Pig, Horse, Human, Mouse, Rabbit, Rat Homology: Cow: 93%; Dog: 93%; Guinea Pig: 93%; Horse: 100%; Human: 100%; Mouse: 86%; Rabbit: 93%; Rat: 93%
Formulation:	Liquid. Purified antibody supplied in 1x PBS buffer with 0.09% (w/v) sodium azide and 2% sucrose. <i>Note that this product is shipped as lyophilized powder to China customers.</i>
Concentration:	lot specific
Purification:	Affinity Purified
Conjugation:	Unconjugated
Storage:	For short term use, store at 2-8°C up to 1 week. For long term storage, store at -20°C in small aliquots to prevent freeze-thaw cycles.
Stability:	Shelf life: one year from despatch.
Predicted Protein Size:	84kDa
Gene Name:	sortilin 1
Database Link:	NP_002950 Entrez Gene 6272 Human Q99523



[View online »](#)

Background:

This gene encodes a protein that is a multi-ligand type-1 receptor with similarity to the yeast carboxypeptidase Y sorting receptor Vps10 protein. The encoded protein, a trans-Golgi network (TGN) transmembrane protein, binds a number of unrelated ligands that participate in a wide range of cellular processes; however, it lacks the typical features of a signalling receptor. In the TGN, furin mediates the activation of the mature binding form. The encoded protein consists of a large luminal domain, a single transmembrane segment and short C-terminal cytoplasmic tail. The luminal domain contains a cysteine-rich region similar to two corresponding segments in the yeast Vps10p; the cytoplasmic tail is similar to the corresponding segment of the cation-independent mannose 6-phosphate receptor and the tail also interacts with the VHS domains of GGA (Golgi-associated, gamma-adaptin homologous, ARF-interacting) proteins.

Synonyms:

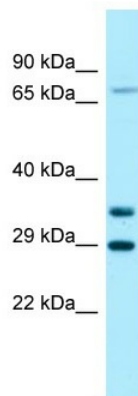
Gp95; NT3; NTR3

Protein Families:

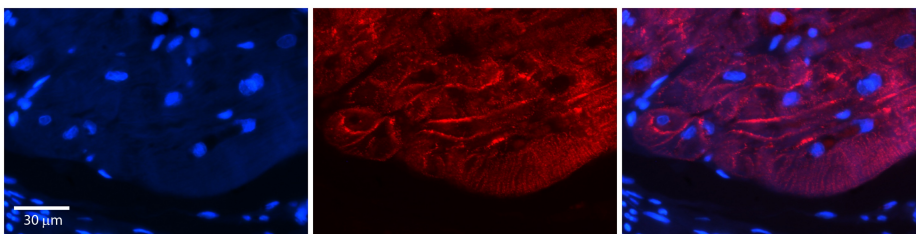
Druggable Genome, Transmembrane

Protein Pathways:

Lysosome, Neurotrophin signaling pathway

Product images:


WB Suggested Anti-SORT1 Antibody
Titration: 1.0 ug/ml
Positive Control: Hela Whole Cell



Rabbit Anti-SORT1 Antibody
Catalog Number: TA358752
Formalin Fixed Paraffin Embedded Tissue:
Human Heart Tissue
Observed Staining: Cytoplasm and plasma
membrane in cardiomyocytes
Primary Antibody Concentration: N/A
Other Working Concentrations: 1:600
Secondary Antibody: Donkey anti-Rabbit-Cy3
Secondary Antibody Concentration: 1:200
Magnification: 20X
Exposure Time: 0.5–2.0 sec