

Product datasheet for **TA358751**

PDE6C Rabbit Polyclonal Antibody

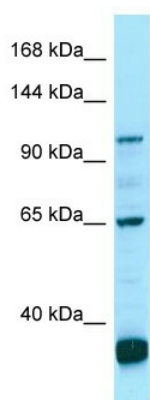
Product data:

Product Type:	Primary Antibodies
Applications:	WB
Reactivity:	Human
Host:	Rabbit
Clonality:	Polyclonal
Specificity:	Expected reactivity: Human Homology: Human: 100%
Formulation:	Liquid. Purified antibody supplied in 1x PBS buffer with 0.09% (w/v) sodium azide and 2% sucrose.
Concentration:	lot specific
Purification:	Affinity Purified
Conjugation:	Unconjugated
Storage:	For short term use, store at 2-8°C up to 1 week. For long term storage, store at -20°C in small aliquots to prevent freeze-thaw cycles.
Stability:	Shelf life: one year from despatch.
Predicted Protein Size:	99kDa
Gene Name:	phosphodiesterase 6C
Database Link:	NP_006195 Entrez Gene 5146 Human P51160
Background:	This gene encodes the alpha-prime subunit of cone phosphodiesterase, which is composed of a homodimer of two alpha-prime subunits and 3 smaller proteins of 11, 13, and 15 kDa. Mutations in this gene are associated with cone dystrophy type 4 (COD4).
Synonyms:	COD4; PDEA2
Protein Families:	Druggable Genome



[View online »](#)

Product images:



WB Suggested Anti-PDE6C Antibody
 Titration: 1.0 ug/ml
 Positive Control: OVCAR-3 Whole Cell
 PDE6C is supported by BioGPS gene expression data to be expressed in OVCAR3