

Product datasheet for **TA358750**

PDE8B Rabbit Polyclonal Antibody

Product data:

Product Type:	Primary Antibodies
Applications:	WB
Reactivity:	Human
Host:	Rabbit
Clonality:	Polyclonal
Specificity:	Expected reactivity: Cow, Dog, Guinea Pig, Horse, Human, Mouse, Pig, Rat, Zebrafish Homology: Cow: 100%; Dog: 100%; Guinea Pig: 93%; Horse: 100%; Human: 100%; Mouse: 100%; Pig: 100%; Rat: 100%; Zebrafish: 79%
Formulation:	Liquid. Purified antibody supplied in 1x PBS buffer with 0.09% (w/v) sodium azide and 2% sucrose. <i>Note that this product is shipped as lyophilized powder to China customers.</i>
Concentration:	lot specific
Purification:	Affinity Purified
Conjugation:	Unconjugated
Storage:	For short term use, store at 2-8°C up to 1 week. For long term storage, store at -20°C in small aliquots to prevent freeze-thaw cycles.
Stability:	Shelf life: one year from despatch.
Predicted Protein Size:	87kDa
Gene Name:	phosphodiesterase 8B
Database Link:	NP_001025022 Entrez Gene 8622 Human O95263-2
Background:	The protein encoded by this gene is a cyclic nucleotide phosphodiesterase (PDE) that catalyzes the hydrolysis of the second messenger cAMP. The encoded protein, which does not hydrolyze cGMP, is resistant to several PDE inhibitors. Defects in this gene are a cause of autosomal dominant striatal degeneration (ADSD). Several transcript variants encoding different isoforms have been found for this gene.
Synonyms:	FLJ11212; HsPDE8B; PPNAD3

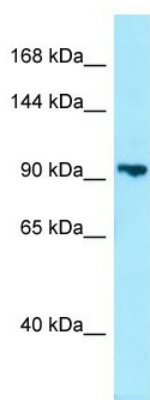


[View online »](#)

Protein Families: Druggable Genome

Protein Pathways: Progesterone-mediated oocyte maturation, Purine metabolism

Product images:



WB Suggested Anti-PDE8B Antibody
Titration: 1.0 ug/ml
Positive Control: HepG2 Whole Cell