

## Product datasheet for **TA358745**

### DMGDH Rabbit Polyclonal Antibody

#### Product data:

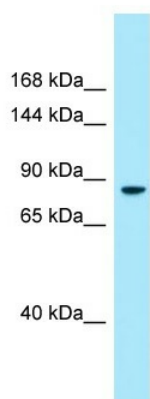
Product Type:	Primary Antibodies
Applications:	WB
Reactivity:	Human
Host:	Rabbit
Clonality:	Polyclonal
Specificity:	<b>Expected reactivity:</b> Horse, Human, Pig, Rat <b>Homology:</b> Horse: 92%; Human: 100%; Pig: 100%; Rat: 93%
Formulation:	Liquid. Purified antibody supplied in 1x PBS buffer with 0.09% (w/v) sodium azide and 2% sucrose. <i>Note that this product is shipped as lyophilized powder to China customers.</i>
Concentration:	lot specific
Purification:	Affinity Purified
Conjugation:	Unconjugated
Storage:	For short term use, store at 2-8°C up to 1 week. For long term storage, store at -20°C in small aliquots to prevent freeze-thaw cycles.
Stability:	Shelf life: one year from despatch.
Predicted Protein Size:	91kDa
Gene Name:	dimethylglycine dehydrogenase
Database Link:	<a href="#">NP_037523</a> <a href="#">Entrez Gene 29958 Human</a> <a href="#">Q9UI17</a>
Background:	This gene encodes an enzyme involved in the catabolism of choline, catalyzing the oxidative demethylation of dimethylglycine to form sarcosine. The enzyme is found as a monomer in the mitochondrial matrix, and uses flavin adenine dinucleotide and folate as cofactors. Mutation in this gene causes dimethylglycine dehydrogenase deficiency, characterized by a fishlike body odor, chronic muscle fatigue, and elevated levels of the muscle form of creatine kinase in serum.
Synonyms:	DMGDHD; ME2GLYDH



[View online »](#)

Protein Pathways: Glycine, serine and threonine metabolism, Metabolic pathways

### Product images:



WB Suggested Anti-DMGDH Antibody  
Titration: 1.0 ug/ml  
Positive Control: Fetal Liver