

Product datasheet for TA358743

RPL4 Rabbit Polyclonal Antibody

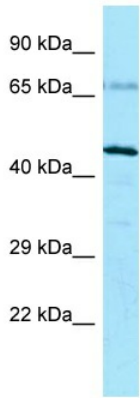
Product data:

Product Type:	Primary Antibodies
Applications:	WB
Reactivity:	Human
Host:	Rabbit
Clonality:	Polyclonal
Specificity:	Expected reactivity: Cow, Dog, Goat, Horse, Human, Mouse, Pig, Rat Homology: Cow: 86%; Dog: 93%; Goat: 86%; Horse: 86%; Human: 100%; Mouse: 100%; Pig: 100%; Rat: 100%
Formulation:	Liquid. Purified antibody supplied in 1x PBS buffer with 0.09% (w/v) sodium azide and 2% sucrose. <i>Note that this product is shipped as lyophilized powder to China customers.</i>
Concentration:	lot specific
Purification:	Affinity Purified
Conjugation:	Unconjugated
Storage:	For short term use, store at 2-8°C up to 1 week. For long term storage, store at -20°C in small aliquots to prevent freeze-thaw cycles.
Stability:	Shelf life: one year from despatch.
Predicted Protein Size:	48kDa
Gene Name:	ribosomal protein L4
Database Link:	NP_000959 Entrez Gene 6124 Human P36578
Background:	Ribosomes, the organelles that catalyze protein synthesis, consist of a small 40S subunit and a large 60S subunit. Together these subunits are composed of 4 RNA species and approximately 80 structurally distinct proteins. This gene encodes a ribosomal protein that is a component of the 60S subunit. The protein belongs to the L4E family of ribosomal proteins. It is located in the cytoplasm. As is typical for genes encoding ribosomal proteins, there are multiple processed pseudogenes of this gene dispersed through the genome.



[View online »](#)

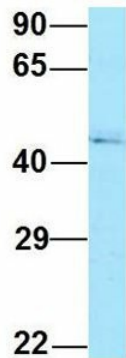
Synonyms: L1; RPL1
Protein Families: Druggable Genome
Protein Pathways: Ribosome

Product images:


Rabbit Anti-RPL4 Antibody
 Catalog Number: ARP64583
 Lot Number: QC35205
 Lane: MCF7 Cell Lysate

 Antibody Titration: 1.0µg/ml
 Gel Concentration: 12%

Host: Rabbit
 Target Name: RPL4
 Sample Type: MCF7 lysates
 Antibody Dilution: 1.0ug/ml

RPL4


Rabbit Anti-RPL4
 Sample Type: Human 721_B
 Antibody Concentration: 1ug/mL

Host: Rabbit
 Target Name: RPL4
 Sample Type: Human 721_B
 Antibody Dilution: 1.0ug/ml
 RPL4 is strongly supported by BioGPS gene expression data to be expressed in Human 721_B cells