

## Product datasheet for **TA358736**

### ELOVL6 Rabbit Polyclonal Antibody

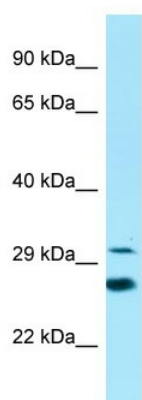
#### Product data:

Product Type:	Primary Antibodies
Applications:	WB
Reactivity:	Human
Host:	Rabbit
Clonality:	Polyclonal
Specificity:	<b>Expected reactivity:</b> Cow, Dog, Guinea Pig, Horse, Human, Mouse, Rabbit, Rat, Zebrafish <b>Homology:</b> Cow: 100%; Dog: 100%; Guinea Pig: 100%; Horse: 100%; Human: 100%; Mouse: 100%; Rabbit: 100%; Rat: 100%; Zebrafish: 86%
Formulation:	Liquid. Purified antibody supplied in 1x PBS buffer with 0.09% (w/v) sodium azide and 2% sucrose. <i>Note that this product is shipped as lyophilized powder to China customers.</i>
Concentration:	lot specific
Purification:	Affinity Purified
Conjugation:	Unconjugated
Storage:	For short term use, store at 2-8°C up to 1 week. For long term storage, store at -20°C in small aliquots to prevent freeze-thaw cycles.
Stability:	Shelf life: one year from despatch.
Predicted Protein Size:	31kDa
Gene Name:	ELOVL fatty acid elongase 6
Database Link:	<a href="#">NP_076995</a> <a href="#">Entrez Gene 79071 Human</a> <a href="#">Q9H5J4</a>
Background:	Fatty acid elongases (EC 6.2.1.3), such as ELOVL6, use malonyl-CoA as a 2-carbon donor in the first and rate-limiting step of fatty acid elongation.
Synonyms:	FACE; FAE; FLJ23378; hELO2; LCE; MGC5487
Protein Families:	Transmembrane
Protein Pathways:	Biosynthesis of unsaturated fatty acids



[View online »](#)

Product images:



WB Suggested Anti-ELOVL6 Antibody  
Titration: 1.0 ug/ml  
Positive Control: Placenta