

## Product datasheet for **TA358728**

### NIPA1 Rabbit Polyclonal Antibody

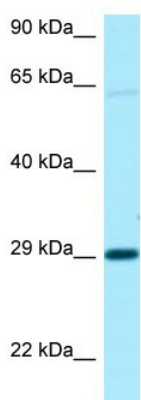
#### Product data:

Product Type:	Primary Antibodies
Applications:	WB
Reactivity:	Human
Host:	Rabbit
Clonality:	Polyclonal
Specificity:	<b>Expected reactivity:</b> Cow, Dog, Guinea Pig, Horse, Human, Mouse, Rat <b>Homology:</b> Cow: 93%; Dog: 100%; Guinea Pig: 100%; Horse: 100%; Human: 100%; Mouse: 100%; Rat: 100%
Formulation:	Liquid. Purified antibody supplied in 1x PBS buffer with 0.09% (w/v) sodium azide and 2% sucrose.
Concentration:	lot specific
Purification:	Affinity Purified
Conjugation:	Unconjugated
Storage:	For short term use, store at 2-8°C up to 1 week. For long term storage, store at -20°C in small aliquots to prevent freeze-thaw cycles.
Stability:	Shelf life: one year from despatch.
Predicted Protein Size:	27kDa
Gene Name:	non imprinted in Prader-Willi/Angelman syndrome 1
Database Link:	<a href="#">NP_001135747</a> <a href="#">Entrez Gene 123606 Human</a> <a href="#">Q7RTP0-2</a>
Background:	This gene encodes a magnesium transporter that associates with early endosomes and the cell surface in a variety of neuronal and epithelial cells. This protein may play a role in nervous system development and maintenance. Multiple transcript variants encoding different isoforms have been found for this gene. Mutations in this gene have been associated with autosomal dominant spastic paraplegia 6.
Synonyms:	FSP3; MGC35570; MGC102724; SPG6
Protein Families:	Druggable Genome, Transmembrane



[View online »](#)

**Product images:**



WB Suggested Anti-NIPA1 Antibody  
Titration: 1.0 ug/ml  
Positive Control: 721\_B Whole Cell