

Product datasheet for **TA358719**

Semaphorin 3E (SEMA3E) Rabbit Polyclonal Antibody

Product data:

Product Type:	Primary Antibodies
Applications:	WB
Reactivity:	Human
Host:	Rabbit
Clonality:	Polyclonal
Specificity:	Expected reactivity: Cow, Dog, Guinea Pig, Horse, Human, Mouse, Pig, Rat Homology: Cow: 100%; Dog: 93%; Guinea Pig: 79%; Horse: 86%; Human: 100%; Mouse: 86%; Pig: 93%; Rat: 86%
Formulation:	Liquid. Purified antibody supplied in 1x PBS buffer with 0.09% (w/v) sodium azide and 2% sucrose. <i>Note that this product is shipped as lyophilized powder to China customers.</i>
Concentration:	lot specific
Purification:	Affinity Purified
Conjugation:	Unconjugated
Storage:	For short term use, store at 2-8°C up to 1 week. For long term storage, store at -20°C in small aliquots to prevent freeze-thaw cycles.
Stability:	Shelf life: one year from despatch.
Predicted Protein Size:	86kDa
Gene Name:	semaphorin 3E
Database Link:	NP_036563 Entrez Gene 9723 Human O15041



[View online »](#)

Background:

Semaphorins are a large family of conserved secreted and membrane associated proteins which possess a semaphorin (Sema) domain and a PSI domain (found in plexins, semaphorins and integrins) in the N-terminal extracellular portion. Based on sequence and structural similarities, semaphorins are put into eight classes: invertebrates contain classes 1 and 2, viruses have class V, and vertebrates contain classes 3-7. Semaphorins serve as axon guidance ligands via multimeric receptor complexes, some (if not all) containing plexin proteins. This gene encodes a class 4 semaphorin. This gene encodes a class 3 semaphorin. Multiple transcript variants encoding different isoforms have been found for this gene.

Synonyms:

coll-5; KIAA0331; M-SEMAH; M-SemaK; SEMAH

Protein Families:

Secreted Protein

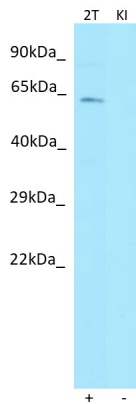
Protein Pathways:

Axon guidance

Product images:



WB Suggested Anti-SEMA3E Antibody
Titration: 1.0 ug/ml
Positive Control: 721_B Whole Cell



Host: Rabbit
Target name: SEMA3E
Positive control: ~25ug 293T Cell Lysate (2T)
Negative control: ~25ug Human Kidney (KI)
Antibody concentration: 1ug/ml

Host: Rabbit
Target: SEMA3E
Positive control (+): 293T Cell Lysate (2T)
Negative control (-): Human Kidney (KI)
Antibody concentration: 1ug/ml