

Product datasheet for **TA358717**

NMD3 Rabbit Polyclonal Antibody

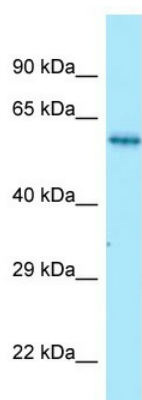
Product data:

Product Type:	Primary Antibodies
Applications:	WB
Reactivity:	Human
Host:	Rabbit
Clonality:	Polyclonal
Specificity:	Expected reactivity: Cow, Dog, Guinea Pig, Horse, Human, Mouse, Pig, Rabbit, Rat Homology: Cow: 86%; Dog: 86%; Guinea Pig: 83%; Horse: 100%; Human: 100%; Mouse: 93%; Pig: 86%; Rabbit: 100%; Rat: 93%
Formulation:	Liquid. Purified antibody supplied in 1x PBS buffer with 0.09% (w/v) sodium azide and 2% sucrose.
Concentration:	lot specific
Purification:	Affinity Purified
Conjugation:	Unconjugated
Storage:	For short term use, store at 2-8°C up to 1 week. For long term storage, store at -20°C in small aliquots to prevent freeze-thaw cycles.
Stability:	Shelf life: one year from despatch.
Predicted Protein Size:	57kDa
Gene Name:	NMD3 ribosome export adaptor
Database Link:	NP_057022 Entrez Gene 51068 Human Q96D46
Background:	Ribosomes are composed of 60S and 40S subunits that are assembled in the nucleolus and exported to the cytoplasm through nuclear pore complexes in the nuclear envelope. NMD3 is an adaptor for 60S subunit export via the CRM1 pathway.
Synonyms:	CGI-07; FLJ21053; hNMD3



[View online »](#)

Product images:



WB Suggested Anti-NMD3 Antibody
Titration: 1.0 ug/ml
Positive Control: Fetal kidney