

Product datasheet for TA358715

RPS17 Rabbit Polyclonal Antibody

Product data:

Product Type:	Primary Antibodies
Applications:	WB
Reactivity:	Human
Host:	Rabbit
Clonality:	Polyclonal
Specificity:	Expected reactivity: Cow, Dog, Guinea Pig, Horse, Human, Mouse, Rabbit, Rat, Sheep, Zebrafish Homology: Cow: 100%; Dog: 100%; Guinea Pig: 100%; Horse: 100%; Human: 100%; Mouse: 100%; Rabbit: 100%; Rat: 100%; Sheep: 100%; Zebrafish: 100%
Formulation:	Liquid. Purified antibody supplied in 1x PBS buffer with 0.09% (w/v) sodium azide and 2% sucrose. <i>Note that this product is shipped as lyophilized powder to China customers.</i>
Concentration:	lot specific
Purification:	Affinity Purified
Conjugation:	Unconjugated
Storage:	For short term use, store at 2-8°C up to 1 week. For long term storage, store at -20°C in small aliquots to prevent freeze-thaw cycles.
Stability:	Shelf life: one year from despatch.
Predicted Protein Size:	15kDa
Gene Name:	ribosomal protein S17
Database Link:	NP_001012 Entrez Gene 6218 Human POCW22
Background:	Ribosomes, the organelles that catalyze protein synthesis, consist of a small 40S subunit and a large 60S subunit. Together these subunits are composed of 4 RNA species and approximately 80 structurally distinct proteins. This gene encodes a ribosomal protein that is a component of the 40S subunit. The protein belongs to the S17E family of ribosomal proteins. It is located in the cytoplasm. As is typical for genes encoding ribosomal proteins, there are multiple processed pseudogenes of this gene dispersed through the genome.



[View online »](#)

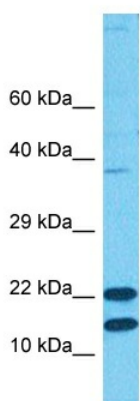
Synonyms: DBA4; MGC72007; RPS17L1; RPS17L2

Protein Pathways: Ribosome

Product images:



WB Suggested Anti-RPS17 Antibody
 Titration: 1.0 ug/ml
 Positive Control: Hela Whole Cell
 RPS17 is strongly supported by BioGPS gene expression data to be expressed in Human HeLa cells



Host: Rabbit
 Target Name: RPS17
 Sample Type: 786-0 Cell Lysate
 Antibody Dilution: 1.0µg/ml

Host: Rabbit
 Target Name: RPS17
 Sample Tissue: Human 786-0 Whole Cell
 Antibody Dilution: 3ug/ml



Host: Rabbit
Target Name: RPS17
Sample Type: A549 Cell Lysate
Antibody Dilution: 1.0 μ g/ml

Host: Rabbit
Target Name: RPS17
Sample Tissue: Human A549 Whole Cell
Antibody Dilution: 0.5 μ g/ml