

Product datasheet for **TA358707**

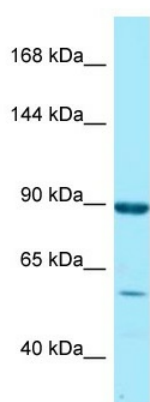
RGL1 Rabbit Polyclonal Antibody

Product data:

Product Type:	Primary Antibodies
Applications:	WB
Reactivity:	Human
Host:	Rabbit
Clonality:	Polyclonal
Specificity:	Expected reactivity: Dog, Guinea Pig, Horse, Human, Mouse, Rabbit, Rat Homology: Dog: 93%; Guinea Pig: 93%; Horse: 93%; Human: 100%; Mouse: 92%; Rabbit: 86%; Rat: 100%
Formulation:	Liquid. Purified antibody supplied in 1x PBS buffer with 0.09% (w/v) sodium azide and 2% sucrose.
Concentration:	lot specific
Purification:	Affinity Purified
Conjugation:	Unconjugated
Storage:	For short term use, store at 2-8°C up to 1 week. For long term storage, store at -20°C in small aliquots to prevent freeze-thaw cycles.
Stability:	Shelf life: one year from despatch.
Predicted Protein Size:	91kDa
Gene Name:	ral guanine nucleotide dissociation stimulator like 1
Database Link:	NP_055964 Entrez Gene 23179 Human Q9NZL6-2
Background:	RGL1 is a probable guanine nucleotide exchange factor.
Synonyms:	KIAA0959; OTTHUMP00000033268; RalGDS-like; RGL

[View online »](#)

Product images:



WB Suggested Anti-RGL1 Antibody
Titration: 1.0 ug/ml
Positive Control: Fetal Heart