

Product datasheet for **TA358705**

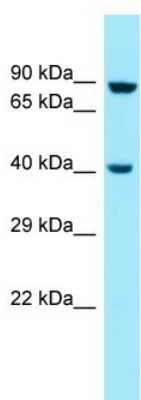
MSL1 Rabbit Polyclonal Antibody

Product data:

Product Type:	Primary Antibodies
Applications:	WB
Reactivity:	Human
Host:	Rabbit
Clonality:	Polyclonal
Specificity:	Expected reactivity: Cow, Dog, Guinea Pig, Horse, Human, Mouse, Rabbit, Rat, Zebrafish Homology: Cow: 100%; Dog: 100%; Guinea Pig: 100%; Horse: 100%; Human: 100%; Mouse: 100%; Rabbit: 100%; Rat: 100%; Zebrafish: 100%
Formulation:	Liquid. Purified antibody supplied in 1x PBS buffer with 0.09% (w/v) sodium azide and 2% sucrose.
Concentration:	lot specific
Purification:	Affinity Purified
Conjugation:	Unconjugated
Storage:	For short term use, store at 2-8°C up to 1 week. For long term storage, store at -20°C in small aliquots to prevent freeze-thaw cycles.
Stability:	Shelf life: one year from despatch.
Predicted Protein Size:	41kDa
Gene Name:	male specific lethal 1 homolog
Database Link:	NP_001012241 Entrez Gene 339287 Human Q68DK7-3
Background:	MSL1 is a component of histone acetyltransferase complex responsible for the majority of histone H4 acetylation at 'Lys-16' which is implicated in the formation of higher-order chromatin structure.
Synonyms:	DKFZp686J17211; DKFZp686P24239; hampin; hMSL1; MGC141861; MSL-1; MSL1L1



[View online »](#)

Product images:

WB Suggested Anti-MSL1 Antibody
Titration: 1.0 ug/ml
Positive Control: 721_B Whole Cell
MSL1 is supported by BioGPS gene expression data to be expressed in 721_B