

## Product datasheet for **TA358703**

### AAMP Rabbit Polyclonal Antibody

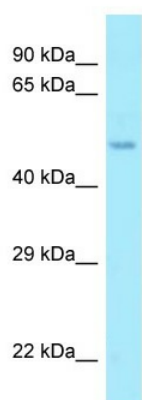
#### Product data:

Product Type:	Primary Antibodies
Applications:	WB
Reactivity:	Human
Host:	Rabbit
Clonality:	Polyclonal
Specificity:	<b>Expected reactivity:</b> Cow, Dog, Guinea Pig, Horse, Human, Mouse, Pig, Rabbit, Rat <b>Homology:</b> Cow: 100%; Dog: 100%; Guinea Pig: 93%; Horse: 100%; Human: 100%; Mouse: 100%; Pig: 100%; Rabbit: 100%; Rat: 100%
Formulation:	Liquid. Purified antibody supplied in 1x PBS buffer with 0.09% (w/v) sodium azide and 2% sucrose. <i>Note that this product is shipped as lyophilized powder to China customers.</i>
Concentration:	lot specific
Purification:	Affinity Purified
Conjugation:	Unconjugated
Storage:	For short term use, store at 2-8°C up to 1 week. For long term storage, store at -20°C in small aliquots to prevent freeze-thaw cycles.
Stability:	Shelf life: one year from despatch.
Predicted Protein Size:	47kDa
Gene Name:	angio associated migratory cell protein
Database Link:	<a href="#">NP_001078</a> <a href="#">Entrez Gene 14 Human</a> <a href="#">Q13685</a>
Background:	The gene product is an immunoglobulin-type protein. It is found to be expressed strongly in endothelial cells, cytotrophoblasts, and poorly differentiated colon adenocarcinoma cells found in lymphatics. The protein contains a heparin-binding domain and mediates heparin-sensitive cell adhesion.
Synonyms:	AAMP



[View online »](#)

## Product images:



WB Suggested Anti-AAMP Antibody  
Titration: 1.0 ug/ml  
Positive Control: MCF7 Whole Cell AAMP is supported by BioGPS gene expression data to be expressed in MCF7