

## Product datasheet for **TA358697**

### ORMDL3 Rabbit Polyclonal Antibody

#### Product data:

Product Type:	Primary Antibodies
Applications:	WB
Reactivity:	Human
Host:	Rabbit
Clonality:	Polyclonal
Specificity:	Pan specific ORMDL1-3 antibody. Predicted to react with ORMDL1, ORMDL2 and ORMDL3.  <b>Expected reactivity:</b> Cow, Dog, Goat, Guinea Pig, Horse, Human, Mouse, Rabbit, Rat, Zebrafish <b>Homology:</b> Cow: 100%; Dog: 100%; Goat: 100%; Guinea Pig: 100%; Horse: 100%; Human: 100%; Mouse: 100%; Rabbit: 100%; Rat: 100%; Zebrafish: 100%
Formulation:	Liquid. Purified antibody supplied in 1x PBS buffer with 0.09% (w/v) sodium azide and 2% sucrose. <i>Note that this product is shipped as lyophilized powder to China customers.</i>
Concentration:	lot specific
Purification:	Affinity Purified
Conjugation:	Unconjugated
Storage:	For short term use, store at 2-8°C up to 1 week. For long term storage, store at -20°C in small aliquots to prevent freeze-thaw cycles.
Stability:	Shelf life: one year from despatch.
Predicted Protein Size:	17kDa
Gene Name:	ORMDL sphingolipid biosynthesis regulator 3
Database Link:	<a href="#">NP_644809</a> <a href="#">Entrez Gene 94103 Human</a> <a href="#">Q8N138</a>
Background:	ORMDL3 is a negative regulator of sphingolipid synthesis. ORMDL3 may indirectly regulate endoplasmic reticulum-mediated Ca(+2) signaling.
Synonyms:	OTTHUMP00000164334



[View online »](#)

Protein Families: Transmembrane

**Product images:**

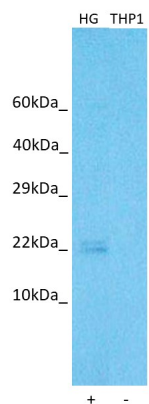


WB Suggested Anti-ORMDL3 Antibody  
Titration: 1.0 ug/ml  
Positive Control: Jurkat Whole Cell



Host: Rabbit  
Target Name: ORMDL3  
Sample Type: HepG2 Cell Lysate  
Antibody Dilution: 1.0µg/ml

Host: Rabbit  
Target Name: ORMDL3  
Sample Tissue: Human HepG2 Whole Cell  
Antibody Dilution: 1 ug/ml



Host: Rabbit  
 Target name: ORMDL3  
 Positive control: ~25ug HepG2 Cell Lysate (HG)  
 Negative control: ~25ug THP1 Cell Lysate (THP1)  
 Antibody concentration: 4ug/ml

Host: Rabbit  
 Target: ORMDL3  
 Positive control (+): HepG2 Cell Lysate (HG)  
 Negative control (-): THP1 Cell Lysate (N30)  
 Antibody concentration: 4ug/ml