

Product datasheet for **TA358694**

RAP2B Rabbit Polyclonal Antibody

Product data:

Product Type:	Primary Antibodies
Applications:	WB
Reactivity:	Human
Host:	Rabbit
Clonality:	Polyclonal
Specificity:	Expected reactivity: Cow, Dog, Guinea Pig, Human, Mouse, Rabbit, Rat, Yeast, Zebrafish Homology: Cow: 93%; Dog: 100%; Guinea Pig: 100%; Human: 100%; Mouse: 100%; Rabbit: 100%; Rat: 100%; Yeast: 79%; Zebrafish: 93%
Formulation:	Liquid. Purified antibody supplied in 1x PBS buffer with 0.09% (w/v) sodium azide and 2% sucrose. <i>Note that this product is shipped as lyophilized powder to China customers.</i>
Concentration:	lot specific
Purification:	Affinity Purified
Conjugation:	Unconjugated
Storage:	For short term use, store at 2-8°C up to 1 week. For long term storage, store at -20°C in small aliquots to prevent freeze-thaw cycles.
Stability:	Shelf life: one year from despatch.
Predicted Protein Size:	20kDa
Gene Name:	RAP2B, member of RAS oncogene family
Database Link:	NP_002877 Entrez Gene 5912 Human P61225
Background:	This intronless gene belongs to a family of RAS-related genes. The proteins encoded by these genes share approximately 50% amino acid identity with the classical RAS proteins and have numerous structural features in common. The most striking difference between the RAP and RAS proteins resides in their 61st amino acid: glutamine in RAS is replaced by threonine in RAP proteins. Evidence suggests that this protein may be polyisoprenylated and palmitoylated.

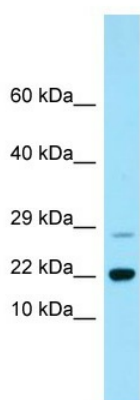


[View online »](#)

Synonyms: MGC20484

Protein Families: Druggable Genome

Product images:



WB Suggested Anti-RAP2B Antibody
Titration: 1.0 ug/ml
Positive Control: Fetal Liver