

## Product datasheet for **TA358691**

### LIPM Rabbit Polyclonal Antibody

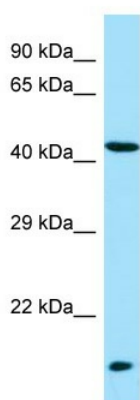
#### Product data:

Product Type:	Primary Antibodies
Applications:	WB
Reactivity:	Human
Host:	Rabbit
Clonality:	Polyclonal
Specificity:	<b>Expected reactivity:</b> Cow, Human, Pig <b>Homology:</b> Cow: 85%; Human: 100%; Pig: 85%
Formulation:	Liquid. Purified antibody supplied in 1x PBS buffer with 0.09% (w/v) sodium azide and 2% sucrose. <i>Note that this product is shipped as lyophilized powder to China customers.</i>
Concentration:	lot specific
Purification:	Affinity Purified
Conjugation:	Unconjugated
Storage:	For short term use, store at 2-8°C up to 1 week. For long term storage, store at -20°C in small aliquots to prevent freeze-thaw cycles.
Stability:	Shelf life: one year from despatch.
Predicted Protein Size:	46kDa
Gene Name:	lipase family member M
Database Link:	<a href="#">NP_001121687</a> <a href="#">Entrez Gene 340654 Human</a> <a href="#">Q5VYY2</a>
Background:	LIPM plays a highly specific role in the last step of keratinocyte differentiation. May have an essential function in lipid metabolism of the most differentiated epidermal layers.
Synonyms:	bA304I5.1; LIPL3
Protein Families:	Druggable Genome



[View online »](#)

Product images:



WB Suggested Anti-LIPM Antibody  
Titration: 1.0 ug/ml  
Positive Control: Fetal Liver