

## Product datasheet for **TA358688**

### GPR3 Rabbit Polyclonal Antibody

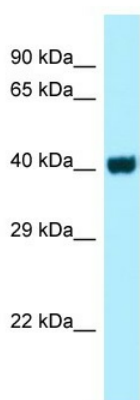
#### Product data:

Product Type:	Primary Antibodies
Applications:	WB
Reactivity:	Human
Host:	Rabbit
Clonality:	Polyclonal
Specificity:	<b>Expected reactivity:</b> Cow, Dog, Guinea Pig, Horse, Human, Mouse, Rabbit, Rat, Zebrafish <b>Homology:</b> Cow: 100%; Dog: 100%; Guinea Pig: 100%; Horse: 100%; Human: 100%; Mouse: 100%; Rabbit: 100%; Rat: 100%; Zebrafish: 77%
Formulation:	Liquid. Purified antibody supplied in 1x PBS buffer with 0.09% (w/v) sodium azide and 2% sucrose. <i>Note that this product is shipped as lyophilized powder to China customers.</i>
Concentration:	lot specific
Purification:	Affinity Purified
Conjugation:	Unconjugated
Storage:	For short term use, store at 2-8°C up to 1 week. For long term storage, store at -20°C in small aliquots to prevent freeze-thaw cycles.
Stability:	Shelf life: one year from despatch.
Predicted Protein Size:	35kDa
Gene Name:	G protein-coupled receptor 3
Database Link:	<a href="#">NP_005272</a> <a href="#">Entrez Gene 2827 Human</a> <a href="#">P46089</a>
Background:	GPR3 is a orphan receptor with constitutive G(s) signaling activity that activate cyclic AMP. GPR3 has a potential role in modulating a number of brain functions, including behavioral responses to stress, amyloid-beta peptide generation in neurons and neurite outgrowth. GPR3 maintains also meiotic arrest in oocytes.
Synonyms:	ACCA; OTTHUMP00000003475; OTTHUMP000000043209
Protein Families:	Druggable Genome, GPCR, Transmembrane



[View online »](#)

Product images:



WB Suggested Anti-GPR3 Antibody  
Titration: 1.0 ug/ml  
Positive Control: HCT15 Whole Cell