

Product datasheet for **TA358685**

CRISP3 Rabbit Polyclonal Antibody

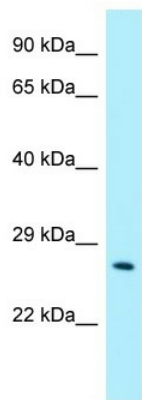
Product data:

Product Type:	Primary Antibodies
Applications:	WB
Reactivity:	Human
Host:	Rabbit
Clonality:	Polyclonal
Specificity:	Expected reactivity: Cow, Dog, Goat, Horse, Human, Mouse, Pig, Rabbit, Rat, Sheep Homology: Cow: 100%; Dog: 93%; Goat: 100%; Horse: 100%; Human: 100%; Mouse: 93%; Pig: 77%; Rabbit: 93%; Rat: 83%; Sheep: 100%
Formulation:	Liquid. Purified antibody supplied in 1x PBS buffer with 0.09% (w/v) sodium azide and 2% sucrose. <i>Note that this product is shipped as lyophilized powder to China customers.</i>
Concentration:	lot specific
Purification:	Affinity Purified
Conjugation:	Unconjugated
Storage:	For short term use, store at 2-8°C up to 1 week. For long term storage, store at -20°C in small aliquots to prevent freeze-thaw cycles.
Stability:	Shelf life: one year from despatch.
Predicted Protein Size:	27kDa
Gene Name:	cysteine rich secretory protein 3
Database Link:	NP_006052 Entrez Gene 10321 Human P54108
Background:	The function of this protein remains unknown.
Synonyms:	Aeg2; CRISP-3; CRS3; dj442L6.3; MGC126588; OTTHUMP00000016590; SGP28
Protein Families:	Secreted Protein



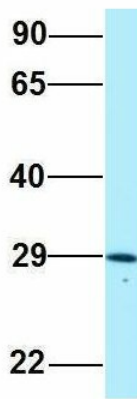
[View online »](#)

Product images:



WB Suggested Anti-CRISP3 Antibody
 Titration: 1.0 ug/ml
 Positive Control: Fetal kidney

CRISP3



Rabbit Anti-CRISP3
 Sample Type: Human Adult Placenta
 Antibody Concentration: 1ug/mL

Host: Rabbit
 Target Name: CRISP3
 Sample Type: Human Adult Placenta
 Antibody Dilution: 1.0ug/ml