

## Product datasheet for **TA358681**

### DYRK2 Rabbit Polyclonal Antibody

#### Product data:

Product Type:	Primary Antibodies
Applications:	WB
Reactivity:	Human
Host:	Rabbit
Clonality:	Polyclonal
Specificity:	<b>Expected reactivity:</b> Cow, Dog, Guinea Pig, Horse, Human, Mouse, Rabbit, Rat, Zebrafish <b>Homology:</b> Cow: 100%; Dog: 100%; Guinea Pig: 100%; Horse: 100%; Human: 100%; Mouse: 93%; Rabbit: 100%; Rat: 100%; Zebrafish: 86%
Formulation:	Liquid. Purified antibody supplied in 1x PBS buffer with 0.09% (w/v) sodium azide and 2% sucrose. <i>Note that this product is shipped as lyophilized powder to China customers.</i>
Concentration:	lot specific
Purification:	Affinity Purified
Conjugation:	Unconjugated
Storage:	For short term use, store at 2-8°C up to 1 week. For long term storage, store at -20°C in small aliquots to prevent freeze-thaw cycles.
Stability:	Shelf life: one year from despatch.
Predicted Protein Size:	60kDa
Gene Name:	dual specificity tyrosine phosphorylation regulated kinase 2
Database Link:	<a href="#">NP_003574</a> <a href="#">Entrez Gene 8445 Human</a> <a href="#">Q92630</a>
Background:	DYRK2 belongs to a family of protein kinases whose members are presumed to be involved in cellular growth and/or development. The family is defined by structural similarity of their kinase domains and their capability to autophosphorylate on tyrosine residues. DYRK2 has demonstrated tyrosine autophosphorylation and catalyzed phosphorylation of histones H3 and H2B in vitro.
Synonyms:	FLJ21217; FLJ21365



[View online »](#)

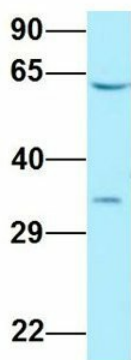
Protein Families: Druggable Genome, Protein Kinase

**Product images:**



WB Suggested Anti-DYRK2 Antibody  
Titration: 1.0 ug/ml  
Positive Control: Jurkat Whole Cell

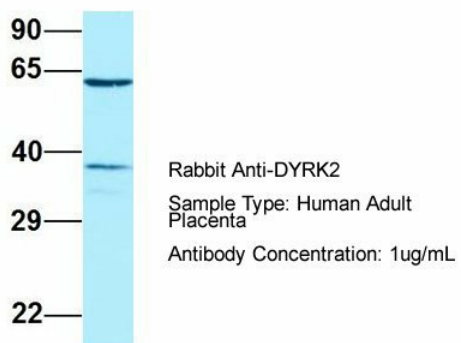
**DYRK2**



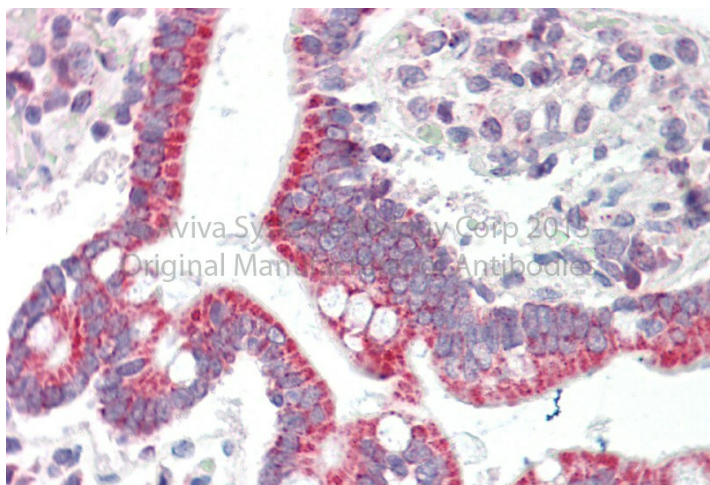
Rabbit Anti-DYRK2  
Sample Type: Human Fetal Lung  
Antibody Concentration: 1ug/mL

Host: Rabbit  
Target Name: DYRK2  
Sample Type: Human Fetal Lung  
Antibody Dilution: 1.0ug/ml

### DYRK2



Host: Rabbit  
Target Name: DYRK2  
Sample Type: Human Adult Placenta  
Antibody Dilution: 1.0ug/ml



Rabbit Anti-DYRK2 antibody  
Catalog Number: ARP64302  
Formalin Fixed Paraffin Embedded Tissue:  
Human Adult Small intestine  
Observed Staining: Cytoplasm in hepatocytes  
Primary Antibody Concentration: 1:600  
Secondary Antibody: Donkey anti-Rabbit-Cy3  
Secondary Antibody Concentration: 1:200  
Magnification: 20X  
Exposure Time: 0.5-2.0 sec