

Product datasheet for **TA358676**

NEU2 Rabbit Polyclonal Antibody

Product data:

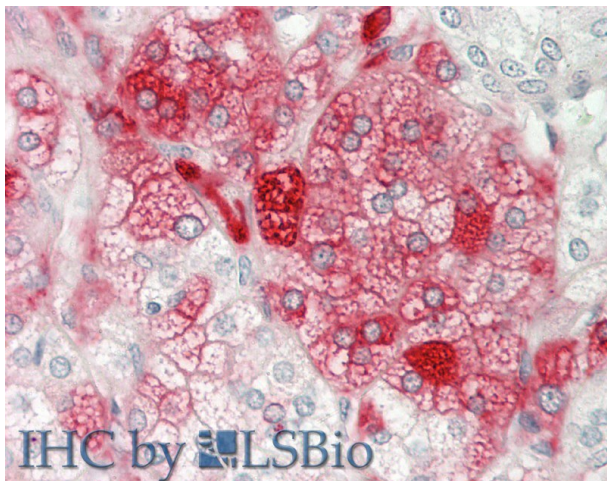
Product Type:	Primary Antibodies
Applications:	IHC
Reactivity:	Human
Host:	Rabbit
Clonality:	Polyclonal
Immunogen:	The immunogen is a synthetic peptide directed towards the following sequence SGAHAYRIPALLYLPGQQSLLAFAEQRASKKDEHAELIVLRRGDYDAPTH
Specificity:	Expected reactivity: Cow, Dog, Guinea Pig, Human, Mouse, Pig, Rabbit, Rat Homology: Cow: 79%; Dog: 86%; Guinea Pig: 85%; Human: 100%; Mouse: 86%; Pig: 86%; Rabbit: 77%; Rat: 79%
Formulation:	Liquid. Purified antibody supplied in 1x PBS buffer with 0.09% (w/v) sodium azide and 2% sucrose.
Concentration:	lot specific
Purification:	Affinity Purified
Conjugation:	Unconjugated
Storage:	For short term use, store at 2-8°C up to 1 week. For long term storage, store at -20°C in small aliquots to prevent freeze-thaw cycles.
Stability:	Shelf life: one year from despatch.
Predicted Protein Size:	42 kDa
Gene Name:	neuraminidase 2 (cytosolic sialidase)
Database Link:	NP_005374 Entrez Gene 4759 Human Q9Y3R4
Background:	This gene belongs to a family of glycohydrolytic enzymes which remove sialic acid residues from glycoproteins and glycolipids. Expression studies in COS7 cells confirmed that this gene encodes a functional sialidase. Its cytosolic localization was demonstrated by cell fractionation experiments.
Synonyms:	MGC129579; SIAL2



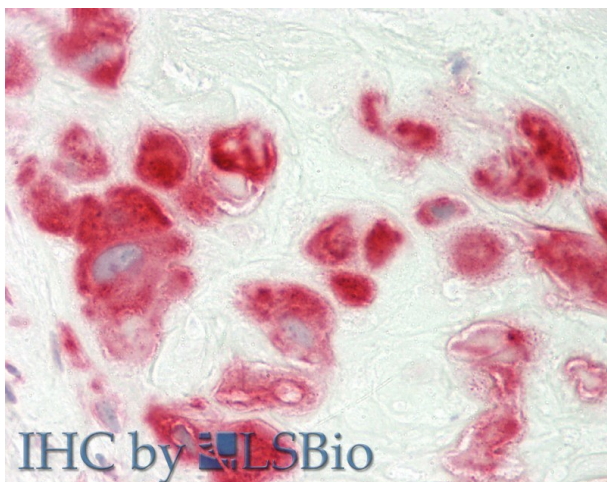
[View online »](#)

Protein Pathways: Other glycan degradation, Sphingolipid metabolism

Product images:



Rabbit Anti-NEU2 antibody
Catalog Number: ARP64280
Formalin Fixed Paraffin Embedded Tissue:
Human Adrenal
Primary antibody Concentration: 1:100
Secondary Antibody: Donkey anti-Rabbit-Cy3
Secondary Antibody Concentration: 1:200
Magnification: 20x
Exposure Time: 0.5-2.0sec



Rabbit Anti-NEU2 antibody
Catalog Number: ARP64280
Formalin Fixed Paraffin Embedded Tissue:
Human Placenta
Primary antibody Concentration: 1:100
Secondary Antibody: Donkey anti-Rabbit-Cy3
Secondary Antibody Concentration: 1:200
Magnification: 20x
Exposure Time: 0.5-2.0sec