

## Product datasheet for **TA358673**

### Leukotriene B4 Receptor 2 (LTB4R2) Rabbit Polyclonal Antibody

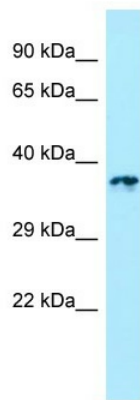
#### Product data:

Product Type:	Primary Antibodies
Applications:	WB
Reactivity:	Human
Host:	Rabbit
Clonality:	Polyclonal
Specificity:	<b>Expected reactivity:</b> Cow, Human, Mouse, Pig, Rabbit, Rat <b>Homology:</b> Cow: 100%; Human: 100%; Mouse: 93%; Pig: 100%; Rabbit: 93%; Rat: 86%
Formulation:	Liquid. Purified antibody supplied in 1x PBS buffer with 0.09% (w/v) sodium azide and 2% sucrose. <i>Note that this product is shipped as lyophilized powder to China customers.</i>
Concentration:	lot specific
Purification:	Affinity Purified
Conjugation:	Unconjugated
Storage:	For short term use, store at 2-8°C up to 1 week. For long term storage, store at -20°C in small aliquots to prevent freeze-thaw cycles.
Stability:	Shelf life: one year from despatch.
Predicted Protein Size:	38kDa
Gene Name:	leukotriene B4 receptor 2
Database Link:	<a href="#">NP_001158164</a> <a href="#">Entrez Gene 56413 Human</a> <a href="#">Q5KU28</a>
Background:	The function of this protein remains unknown.
Synonyms:	BLT2; BLT2R; BLTR2; JULF2; KPG_004; LTB4-R2; NOP9
Protein Families:	Druggable Genome, GPCR, Transmembrane
Protein Pathways:	Calcium signaling pathway, Neuroactive ligand-receptor interaction

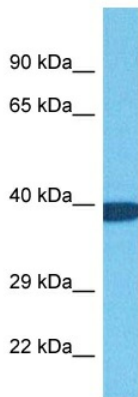


[View online »](#)

Product images:



WB Suggested Anti-LTB4R2 Antibody  
Titration: 1.0 ug/ml  
Positive Control: 721\_B Whole Cell LTB4R2 is supported by BioGPS gene expression data to be expressed in 721\_B



Host: Rabbit  
Target Name: LTB4R2  
Sample Type: A549 Cell Lysate  
Antibody Dilution: 1.0µg/ml

Host: Rabbit  
Target Name: LTB4R2  
Sample Tissue: Human A549 Whole Cell  
Antibody Dilution: 1ug/ml