

Product datasheet for **TA358671**

Leukotriene B4 Receptor 2 (LTB4R2) Rabbit Polyclonal Antibody

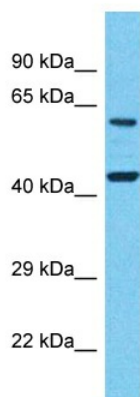
Product data:

Product Type:	Primary Antibodies
Applications:	WB
Reactivity:	Human
Host:	Rabbit
Clonality:	Polyclonal
Immunogen:	The immunogen is a synthetic peptide directed towards the C-terminal region of Human LTB4R2
Specificity:	Expected reactivity: Human
Formulation:	Liquid. Purified antibody supplied in 1x PBS buffer with 0.09% (w/v) sodium azide and 2% sucrose. <i>Note that this product is shipped as lyophilized powder to China customers.</i>
Concentration:	lot specific
Purification:	Affinity Purified
Conjugation:	Unconjugated
Storage:	For short term use, store at 2-8°C up to 1 week. For long term storage, store at -20°C in small aliquots to prevent freeze-thaw cycles.
Stability:	Shelf life: one year from despatch.
Predicted Protein Size:	42kDa
Gene Name:	leukotriene B4 receptor 2
Database Link:	Entrez Gene 56413 Human Q9NPC1
Background:	LTB4R2 is a low-affinity receptor for leukotrienes including leukotriene B4. It mediates chemotaxis of granulocytes and macrophages. The response is mediated via G-proteins that activate a phosphatidylinositol-calcium second messenger system. The rank order of affinities for the leukotrienes is LTB4 > 12-epi-LTB4 > LTB5 > LTB3.
Synonyms:	BLT2; BLT2R; BLTR2; JULF2; KPG_004; LTB4-R2; NOP9



[View online »](#)

Product images:



Host: Rabbit
Target Name: LTB4R2
Sample Tissue: Placenta Lysate
Antibody Dilution: 1.0 μ g/ml

Host: Rabbit
Target Name: LTB4R2
Sample Type: Placenta lysates
Antibody Dilution: 1.0ug/ml