

## Product datasheet for **TA358668**

### PCTP Rabbit Polyclonal Antibody

#### Product data:

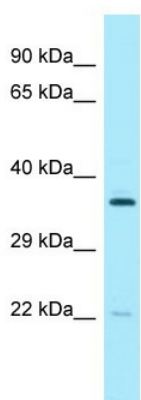
Product Type:	Primary Antibodies
Applications:	WB
Reactivity:	Human
Host:	Rabbit
Clonality:	Polyclonal
Specificity:	<b>Expected reactivity:</b> Cow, Dog, Guinea Pig, Human, Mouse, Rabbit, Rat <b>Homology:</b> Cow: 85%; Dog: 100%; Guinea Pig: 85%; Human: 100%; Mouse: 93%; Rabbit: 93%; Rat: 93%
Formulation:	Liquid. Purified antibody supplied in 1x PBS buffer with 0.09% (w/v) sodium azide and 2% sucrose. <i>Note that this product is shipped as lyophilized powder to China customers.</i>
Concentration:	lot specific
Purification:	Affinity Purified
Conjugation:	Unconjugated
Storage:	For short term use, store at 2-8°C up to 1 week. For long term storage, store at -20°C in small aliquots to prevent freeze-thaw cycles.
Stability:	Shelf life: one year from despatch.
Predicted Protein Size:	17kDa
Gene Name:	phosphatidylcholine transfer protein
Database Link:	<a href="#">NP_001095872</a> <a href="#">Entrez Gene 58488 Human</a> <a href="#">Q9UKL6-2</a>
Background:	PCTP catalyzes the transfer of phosphatidylcholine between membranes. PCTP binds a single lipid molecule.
Synonyms:	PC-TP; STARD2



[View online »](#)



## Product images:



WB Suggested Anti-PCTP Antibody  
Titration: 1.0 ug/ml  
Positive Control: 721\_B Whole Cell