

Product datasheet for **TA358665**

PCTP Rabbit Polyclonal Antibody

Product data:

Product Type:	Primary Antibodies
Applications:	IHC
Reactivity:	Human
Host:	Rabbit
Clonality:	Polyclonal
Immunogen:	The immunogen is a synthetic peptide directed towards the following sequence VLEDCSPTLLADIYMDSDYRKQWDQYVKELYEQECNGETVVYWEVKYPFP
Specificity:	Expected reactivity: Cow, Dog, Guinea Pig, Horse, Human, Rabbit, Rat Homology: Cow: 86%; Dog: 93%; Guinea Pig: 86%; Horse: 77%; Human: 100%; Rabbit: 86%; Rat: 86%
Formulation:	Liquid. Purified antibody supplied in 1x PBS buffer with 0.09% (w/v) sodium azide and 2% sucrose.
Concentration:	lot specific
Purification:	Affinity Purified
Conjugation:	Unconjugated
Storage:	For short term use, store at 2-8°C up to 1 week. For long term storage, store at -20°C in small aliquots to prevent freeze-thaw cycles.
Stability:	Shelf life: one year from despatch.
Predicted Protein Size:	25 kDa
Gene Name:	phosphatidylcholine transfer protein
Database Link:	NP_001095872 Entrez Gene 58488 Human Q9UKL6
Synonyms:	PC-TP; STARD2



[View online »](#)

Product images:

Host: Rabbit

Target Name: PCTP1

Sample Type:

Lane 1: Human Liver

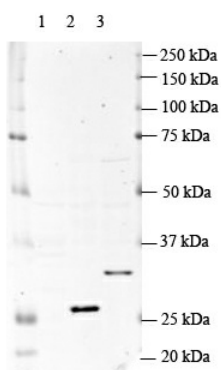
Lane 2: Mouse Liver

Lane 3: Rat Liver

Primary Dilution: 1:1000

Secondary Dilution: 1:2500

Anti-rabbit secondary antibody
conjugated with Alexa Fluor 647



Host: Rabbit

Target Name: PCTP1

Sample Type:

Lane 1: 40 ug Human Liver lysate

Lane 2: 40 ug Mouse Liver lysate

Lane 3: 40 ug Rat Liver lysate

Primary Antibody Dilution:
1:1000

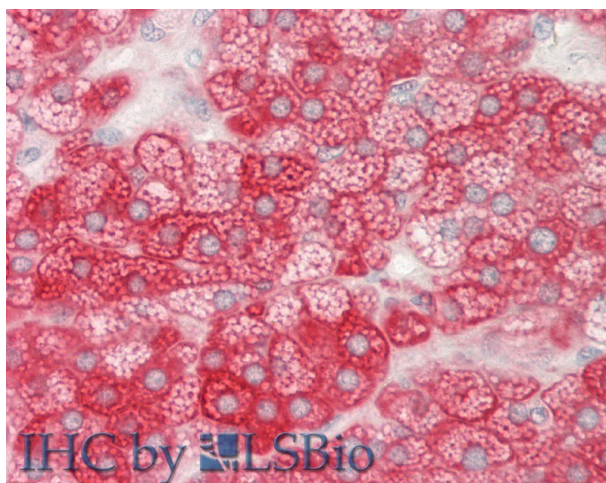
Secondary Antibody:

Anti-rabbit secondary antibody conjugated with
Alexa Fluor 647

Secondary Antibody Dilution:
1:2500

Submitted by:

Hua Jiang, University of Colorado.



Rabbit Anti-PCTP antibody

Catalog Number: ARP64249

Formalin Fixed Paraffin Embedded Tissue:

Human Adrenal

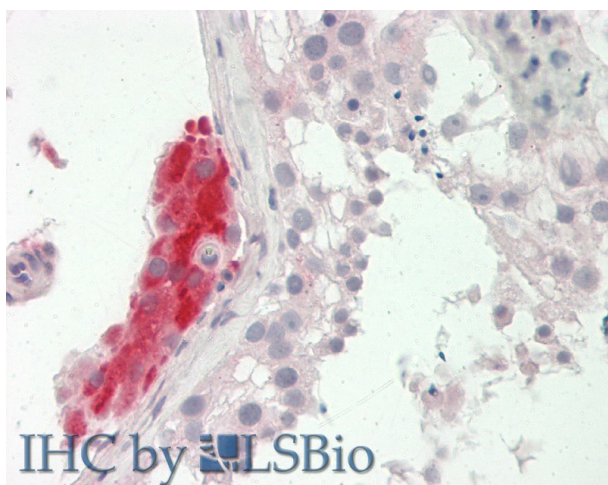
Primary antibody Concentration: 1:100

Secondary Antibody: Donkey anti-Rabbit-Cy3

Secondary Antibody Concentration: 1:200

Magnification: 20x

Exposure Time: 0.5-2.0sec



Rabbit Anti-PCTP antibody
Catalog Number: ARP64249
Formalin Fixed Paraffin Embedded Tissue:
Human Testis
Primary antibody Concentration: 1:100
Secondary Antibody: Donkey anti-Rabbit-Cy3
Secondary Antibody Concentration: 1:200
Magnification: 20x
Exposure Time: 0.5-2.0sec