

Product datasheet for **TA358650**

SEC62 Rabbit Polyclonal Antibody

Product data:

Product Type:	Primary Antibodies
Applications:	WB
Reactivity:	Human
Host:	Rabbit
Clonality:	Polyclonal
Specificity:	Expected reactivity: Cow, Dog, Guinea Pig, Horse, Human, Mouse, Rabbit, Rat Homology: Cow: 93%; Dog: 93%; Guinea Pig: 100%; Horse: 93%; Human: 100%; Mouse: 86%; Rabbit: 93%; Rat: 100%
Formulation:	Liquid. Purified antibody supplied in 1x PBS buffer with 0.09% (w/v) sodium azide and 2% sucrose.
Concentration:	lot specific
Purification:	Affinity Purified
Conjugation:	Unconjugated
Storage:	For short term use, store at 2-8°C up to 1 week. For long term storage, store at -20°C in small aliquots to prevent freeze-thaw cycles.
Stability:	Shelf life: one year from despatch.
Predicted Protein Size:	46kDa
Gene Name:	SEC62 homolog, preprotein translocation factor
Database Link:	NP_003253 Entrez Gene 7095 Human Q99442
Background:	The Sec61 complex is the central component of the protein translocation apparatus of the endoplasmic reticulum (ER) membrane. The protein encoded by this gene and SEC63 protein are found to be associated with ribosome-free SEC61 complex. It is speculated that Sec61-Sec62-Sec63 may perform post-translational protein translocation into the ER. The Sec61-Sec62-Sec63 complex might also perform the backward transport of ER proteins that are subject to the ubiquitin-proteasome-dependent degradation pathway. The encoded protein is an integral membrane protein located in the rough ER.

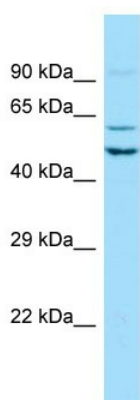


[View online »](#)

Synonyms: Dtrp1; FLJ32803; hTP-1; HTP1; TLOC1; TP-1

Protein Families: Druggable Genome, Transmembrane

Product images:



WB Suggested Anti-SEC62 Antibody

Titration: 1.0 ug/ml

Positive Control: NCI-H226 Whole Cell SEC62 is strongly supported by BioGPS gene expression data to be expressed in Human NCI-H226 cells