

Product datasheet for **TA358649**

RENBP Rabbit Polyclonal Antibody

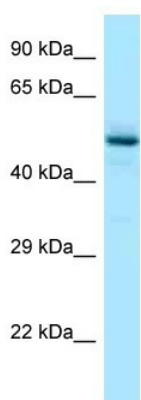
Product data:

Product Type:	Primary Antibodies
Applications:	WB
Reactivity:	Human
Host:	Rabbit
Clonality:	Polyclonal
Specificity:	Expected reactivity: Human, Mouse, Rabbit, Rat Homology: Human: 100%; Mouse: 100%; Rabbit: 79%; Rat: 100%
Formulation:	Liquid. Purified antibody supplied in 1x PBS buffer with 0.09% (w/v) sodium azide and 2% sucrose. <i>Note that this product is shipped as lyophilized powder to China customers.</i>
Concentration:	lot specific
Purification:	Affinity Purified
Conjugation:	Unconjugated
Storage:	For short term use, store at 2-8°C up to 1 week. For long term storage, store at -20°C in small aliquots to prevent freeze-thaw cycles.
Stability:	Shelf life: one year from despatch.
Predicted Protein Size:	48kDa
Gene Name:	renin binding protein
Database Link:	NP_002901 Entrez Gene 5973 Human P51606
Background:	The gene product inhibits renin activity by forming a dimer with renin, a complex known as high molecular weight renin. The encoded protein contains a leucine zipper domain, which is essential for its dimerization with renin. The gene product can catalyze the interconversion of N-acetylglucosamine to N-acetylmannosamine, indicating that it is a GlcNAc 2-epimerase. Transcript variants utilizing alternative promoters have been described in the literature.
Synonyms:	AGE; RBP; RNBP
Protein Pathways:	Amino sugar and nucleotide sugar metabolism



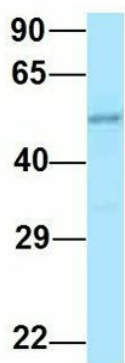
[View online »](#)

Product images:



WB Suggested Anti-RENBP Antibody
Titration: 1.0 ug/ml
Positive Control: Fetal Liver

RENBP



Rabbit Anti-RENBP
Sample Type: Human Adult Placenta
Antibody Concentration: 1ug/mL

Host: Rabbit
Target Name: RENBP
Sample Type: Human Adult Placenta
Antibody Dilution: 1.0ug/ml