

Product datasheet for **TA358645**

GPBAR1 Rabbit Polyclonal Antibody

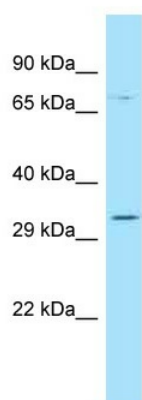
Product data:

Product Type:	Primary Antibodies
Applications:	WB
Reactivity:	Human
Host:	Rabbit
Clonality:	Polyclonal
Specificity:	Expected reactivity: Human, Rat Homology: Human: 100%; Rat: 100%
Formulation:	Liquid. Purified antibody supplied in 1x PBS buffer with 0.09% (w/v) sodium azide and 2% sucrose. <i>Note that this product is shipped as lyophilized powder to China customers.</i>
Concentration:	lot specific
Purification:	Affinity Purified
Conjugation:	Unconjugated
Storage:	For short term use, store at 2-8°C up to 1 week. For long term storage, store at -20°C in small aliquots to prevent freeze-thaw cycles.
Stability:	Shelf life: one year from despatch.
Predicted Protein Size:	35kDa
Gene Name:	G protein-coupled bile acid receptor 1
Database Link:	NP_733800 Entrez Gene 151306 Human Q8TDU6
Background:	This gene encodes a member of the G protein-coupled receptor (GPCR) superfamily. This enzyme functions as a cell surface receptor for bile acids. Treatment of cells expressing this GPCR with bile acids induces the production of intracellular cAMP, activation of a MAP kinase signaling pathway, and internalization of the receptor. The receptor is implicated in the suppression of macrophage functions and regulation of energy homeostasis by bile acids.
Synonyms:	BG37; GPCR; GPCR19; GPR131; hBG37; hGPCR19; M-BAR; MGC40597; TGR5
Protein Families:	Druggable Genome



[View online »](#)

Product images:



WB Suggested Anti-GPBAR1 Antibody
Titration: 1.0 ug/ml
Positive Control: MCF7 Whole Cell