

Product datasheet for **TA358643**

RILP Rabbit Polyclonal Antibody

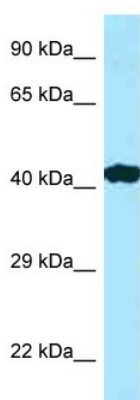
Product data:

Product Type:	Primary Antibodies
Applications:	WB
Reactivity:	Human
Host:	Rabbit
Clonality:	Polyclonal
Specificity:	Expected reactivity: Human Homology: Human: 100%
Formulation:	Liquid. Purified antibody supplied in 1x PBS buffer with 0.09% (w/v) sodium azide and 2% sucrose. <i>Note that this product is shipped as lyophilized powder to China customers.</i>
Concentration:	lot specific
Purification:	Affinity Purified
Conjugation:	Unconjugated
Storage:	For short term use, store at 2-8°C up to 1 week. For long term storage, store at -20°C in small aliquots to prevent freeze-thaw cycles.
Stability:	Shelf life: one year from despatch.
Predicted Protein Size:	44kDa
Gene Name:	Rab interacting lysosomal protein
Database Link:	NP_113618 Entrez Gene 83547 Human Q96NA2
Background:	This gene encodes a lysosomal protein that interacts with RAB7, a small GTPase that controls transport to endocytic degradative compartments. Studies using mutant forms of the two proteins suggest that this protein represents a downstream effector for RAB7, and both proteins act together in the regulation of late endocytic traffic. A unique region of this protein has also been shown to be involved in the regulation of lysosomal morphology.
Synonyms:	EPM1B; FLJ31193; PP10141; PRICKLE1

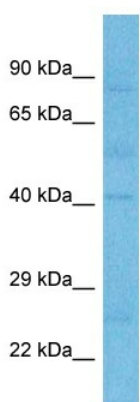


[View online »](#)

Product images:



WB Suggested Anti-RILP Antibody
Titration: 1.0 ug/ml
Positive Control: Placenta



Host: Rabbit
Target Name: RILP
Sample Type: Ovary Tumor Lysate
Antibody Dilution: 1.0µg/ml

Host: Rabbit
Target Name: RILP
Sample Tissue: Human Ovary Tumor
Antibody Dilution: 1ug/ml