

## Product datasheet for **TA358642**

### CCN5 Rabbit Polyclonal Antibody

#### Product data:

Product Type:	Primary Antibodies
Applications:	WB
Reactivity:	Human
Host:	Rabbit
Clonality:	Polyclonal
Specificity:	<b>Expected reactivity:</b> Dog, Horse, Human, Pig, Rat <b>Homology:</b> Dog: 79%; Horse: 79%; Human: 100%; Pig: 79%; Rat: 79%
Formulation:	Liquid. Purified antibody supplied in 1x PBS buffer with 0.09% (w/v) sodium azide and 2% sucrose. <i>Note that this product is shipped as lyophilized powder to China customers.</i>
Concentration:	lot specific
Purification:	Affinity Purified
Conjugation:	Unconjugated
Storage:	For short term use, store at 2-8°C up to 1 week. For long term storage, store at -20°C in small aliquots to prevent freeze-thaw cycles.
Stability:	Shelf life: one year from despatch.
Predicted Protein Size:	24kDa
Gene Name:	WNT1 inducible signaling pathway protein 2
Database Link:	<a href="#">NP_003872</a> <a href="#">Entrez Gene 8839 Human</a> <a href="#">O76076</a>



[View online »](#)

**Background:**

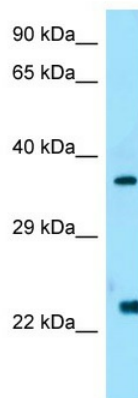
This gene encodes a member of the WNT1 inducible signaling pathway (WISP) protein subfamily, which belongs to the connective tissue growth factor (CTGF) family. WNT1 is a member of a family of cysteine-rich, glycosylated signaling proteins that mediate diverse developmental processes. The CTGF family members are characterized by four conserved cysteine-rich domains: insulin-like growth factor-binding domain, von Willebrand factor type C module, thrombospondin domain and C-terminal cystine knot-like (CT) domain. The encoded protein lacks the CT domain which is implicated in dimerization and heparin binding. It is 72% identical to the mouse protein at the amino acid level. This gene may be downstream in the WNT1 signaling pathway that is relevant to malignant transformation. Its expression in colon tumors is reduced while the other two WISP members are overexpressed in colon tumors. It is expressed at high levels in bone tissue, and may play an important role in modulating bone turnover.

**Synonyms:**

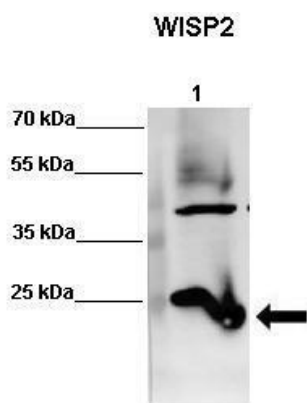
CCN5; CT58; CTGF-L; CTGFL; OTTHUMP00000063227; WISP-2

**Protein Families:**

Druggable Genome, ES Cell Differentiation/IPS, Secreted Protein

**Product images:**

Host: Rabbit  
Target Name: WISP2  
Antibody Dilution: 1.0ug/ml  
Sample Type: Human Placenta



HeLaWISP2 is supported by BioGPS gene expression data to be expressed in HeLa

See Immunoblot 2 Data and Customer Feedback for more Information