

Product datasheet for **TA358636**

Galectin 7 (LGALS7) Rabbit Polyclonal Antibody

Product data:

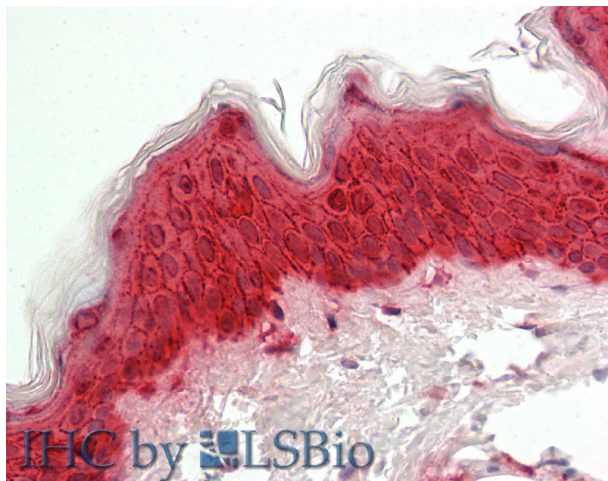
Product Type:	Primary Antibodies
Applications:	IHC
Reactivity:	Human
Host:	Rabbit
Clonality:	Polyclonal
Immunogen:	The immunogen is a synthetic peptide directed towards the following sequence SRFHVNLLCGEEQGSDAALHFNPRLDTSEVVFNSKEQGSWGREERGPGVP
Specificity:	Expected reactivity: Cow, Dog, Human, Mouse, Pig, Rat Homology: Cow: 93%; Dog: 79%; Human: 100%; Mouse: 93%; Pig: 86%; Rat: 86%
Formulation:	Liquid. Purified antibody supplied in 1x PBS buffer with 0.09% (w/v) sodium azide and 2% sucrose.
Concentration:	lot specific
Purification:	Affinity Purified
Conjugation:	Unconjugated
Storage:	For short term use, store at 2-8°C up to 1 week. For long term storage, store at -20°C in small aliquots to prevent freeze-thaw cycles.
Stability:	Shelf life: one year from despatch.
Predicted Protein Size:	15 kDa
Gene Name:	galectin 7
Database Link:	NP_002298 Entrez Gene 3963 Human P47929
Background:	The galectins are a family of beta-galactoside-binding proteins implicated in modulating cell-cell and cell-matrix interactions. Differential and in situ hybridization studies indicate that this lectin is specifically expressed in keratinocytes and found mainly in stratified squamous epithelium. A duplicate copy of this gene (GeneID:653499) is found adjacent to, but on the opposite strand on chromosome 19.
Synonyms:	Gal-7; GAL7; galectin-7; HKL-14; LGALS7A; PI7; PIG1; TP5311



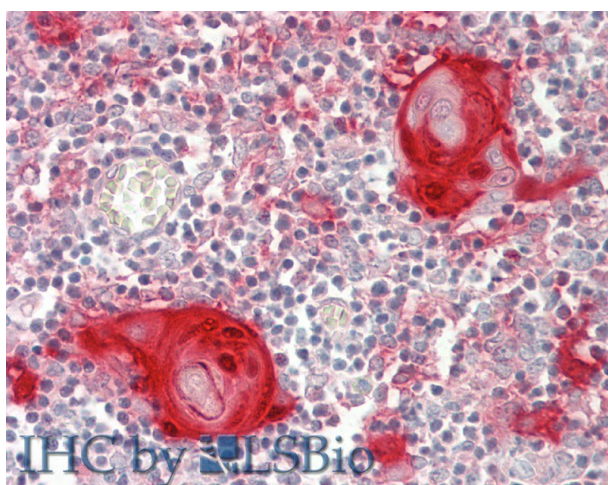
[View online »](#)

Protein Families: Secreted Protein

Product images:



Rabbit Anti-LGALS7 antibody
Catalog Number: ARP64142
Formalin Fixed Paraffin Embedded Tissue:
Human Skin
Primary antibody Concentration: 1:100
Secondary Antibody: Donkey anti-Rabbit-Cy3
Secondary Antibody Concentration: 1:200
Magnification: 20x
Exposure Time: 0.5-2.0sec



Rabbit Anti-LGALS7 antibody
Catalog Number: ARP64142
Formalin Fixed Paraffin Embedded Tissue:
Human Thymus
Primary antibody Concentration: 1:100
Secondary Antibody: Donkey anti-Rabbit-Cy3
Secondary Antibody Concentration: 1:200
Magnification: 20x
Exposure Time: 0.5-2.0sec