

Product datasheet for **TA358628**

CCKAR Rabbit Polyclonal Antibody

Product data:

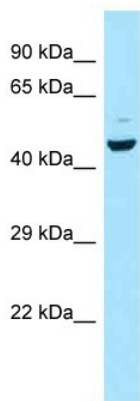
Product Type:	Primary Antibodies
Applications:	WB
Reactivity:	Human
Host:	Rabbit
Clonality:	Polyclonal
Specificity:	Expected reactivity: Cow, Guinea Pig, Horse, Human, Rabbit, Rat Homology: Cow: 79%; Guinea Pig: 79%; Horse: 83%; Human: 100%; Rabbit: 86%; Rat: 93%
Formulation:	Liquid. Purified antibody supplied in 1x PBS buffer with 0.09% (w/v) sodium azide and 2% sucrose. <i>Note that this product is shipped as lyophilized powder to China customers.</i>
Concentration:	lot specific
Purification:	Affinity Purified
Conjugation:	Unconjugated
Storage:	For short term use, store at 2-8°C up to 1 week. For long term storage, store at -20°C in small aliquots to prevent freeze-thaw cycles.
Stability:	Shelf life: one year from despatch.
Predicted Protein Size:	48kDa
Gene Name:	cholecystokinin A receptor
Database Link:	NP_000721 Entrez Gene 886 Human P32238
Background:	This gene encodes a G-protein coupled receptor that binds non-sulfated members of the cholecystokinin (CCK) family of peptide hormones. This receptor is a major physiologic mediator of pancreatic enzyme secretion and smooth muscle contraction of the gallbladder and stomach. In the central and peripheral nervous system this receptor regulates satiety and the release of beta-endorphin and dopamine.
Synonyms:	CCK-A; CCK-AR; CCK1-R; CCKRA
Protein Families:	Druggable Genome, Transmembrane



[View online »](#)

Protein Pathways: Calcium signaling pathway, Neuroactive ligand-receptor interaction

Product images:



WB Suggested Anti-CCKAR Antibody
 Titration: 1.0 ug/ml
 Positive Control: MCF7 Whole Cell



Anti-CCKAR Western Blot & Peptide Block Validation

Lot Number: QC34820
 Sample Type: Human Liver
 Lane A: Primary Antibody
 Lane B: Primary Antibody + Blocking Peptide
 Primary Antibody Concentration: 1.0ug/ml
 Peptide Concentration: 2.0ug/ml
 Lysate Quantity: 25ug/lane

Host: Rabbit
 Target Name: CCKAR
 Sample Type: Human Liver
 Lane A: Primary Antibody
 Lane B: Primary Antibody + Blocking Peptide
 Primary Antibody Concentration: 1.0 ug/ml
 Peptide Concentration: 2.0 ug/ml
 Lysate Quantity: 25 ug/lane