

Product datasheet for **TA358625**

RAB1B Rabbit Polyclonal Antibody

Product data:

Product Type:	Primary Antibodies
Applications:	WB
Reactivity:	Human, Mouse
Host:	Rabbit
Clonality:	Polyclonal
Specificity:	Expected reactivity: Cow, Dog, Guinea Pig, Horse, Human, Mouse, Rat Homology: Cow: 100%; Dog: 100%; Guinea Pig: 100%; Horse: 100%; Human: 100%; Mouse: 100%; Rat: 100%
Formulation:	Liquid. Purified antibody supplied in 1x PBS buffer with 0.09% (w/v) sodium azide and 2% sucrose. <i>Note that this product is shipped as lyophilized powder to China customers.</i>
Concentration:	lot specific
Purification:	Affinity Purified
Conjugation:	Unconjugated
Storage:	For short term use, store at 2-8°C up to 1 week. For long term storage, store at -20°C in small aliquots to prevent freeze-thaw cycles.
Stability:	Shelf life: one year from despatch.
Predicted Protein Size:	22kDa
Gene Name:	RAB1B, member RAS oncogene family
Database Link:	NP_112243 Entrez Gene 81876 Human Q9H0U4
Background:	Members of the RAB protein family, such as RAB1B, are low molecular mass monomeric GTPases localized on the cytoplasmic surfaces of distinct membrane-bound organelles. RAB1B functions in the early secretory pathway and is essential for vesicle transport between the endoplasmic reticulum (ER) and Golgi.
Synonyms:	RAB1B
Protein Families:	Transcription Factors

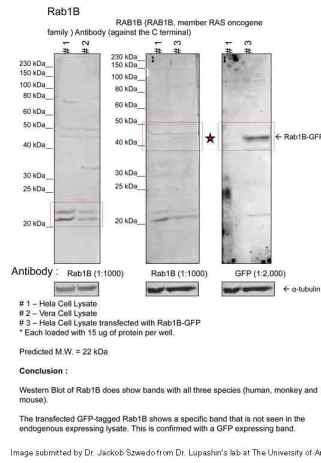


[View online »](#)

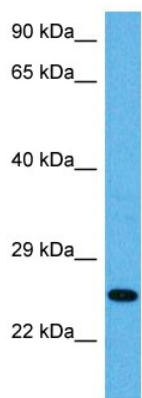
Product images:



RAB1B antibody - C-terminal region (TA358625) validated by WB using Fetal Kidney Lysate at 1ug/ml.



human Hela Cells and Monkey Vera



Host: Rabbit
Target Name: Rab1b
Sample Type: Mouse Brain Lysate
Antibody Dilution: 1.0 μ g/ml

Host: Mouse
Target Name: RAB1B
Sample Tissue: Mouse Brain
Antibody Dilution: 1 μ g/ml