

Product datasheet for **TA358606**

RAP2A Rabbit Polyclonal Antibody

Product data:

Product Type:	Primary Antibodies
Applications:	WB
Reactivity:	Human
Host:	Rabbit
Clonality:	Polyclonal
Specificity:	Expected reactivity: Cow, Dog, Guinea Pig, Horse, Human, Mouse, Rabbit, Rat, Sheep, Zebrafish Homology: Cow: 100%; Dog: 100%; Guinea Pig: 100%; Horse: 100%; Human: 100%; Mouse: 100%; Rabbit: 100%; Rat: 100%; Sheep: 100%; Zebrafish: 100%
Formulation:	Liquid. Purified antibody supplied in 1x PBS buffer with 0.09% (w/v) sodium azide and 2% sucrose.
Concentration:	lot specific
Purification:	Affinity Purified
Conjugation:	Unconjugated
Storage:	For short term use, store at 2-8°C up to 1 week. For long term storage, store at -20°C in small aliquots to prevent freeze-thaw cycles.
Stability:	Shelf life: one year from despatch.
Predicted Protein Size:	20kDa
Gene Name:	RAP2A, member of RAS oncogene family
Database Link:	NP_066361 Entrez Gene 5911 Human P10114
Background:	RAP2A is a small GTP-binding protein which cycles between a GDP-bound inactive and a GTP-bound active form. In its active form interacts with and regulates several effectors including MAP4K4, MINK1 and TNIK. Part of a signaling complex composed of NEDD4, RAP2A and TNIK which regulates neuronal dendrite extension and arborization during development. More generally, it is part of several signaling cascades and may regulate cytoskeletal rearrangements, cell migration, cell adhesion and cell spreading.



[View online »](#)

Synonyms: K-REV; KREV; RAP2; RbBP-30

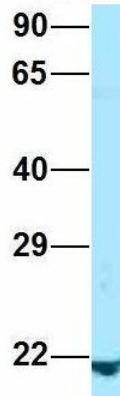
Protein Families: Druggable Genome

Product images:



WB Suggested Anti-RAP2A Antibody
Titration: 1.0 ug/ml
Positive Control: Hela Whole Cell

RAP2A



Rabbit Anti-RAP2A
Sample Type: Human 721_B
Antibody Concentration: 1ug/mL

Host: Rabbit
Target Name: RAP2A
Sample Type: 721_B
Antibody Dilution: 1.0ug/ml
RAP2A is strongly supported by BioGPS gene expression data to be expressed in Human 721_B cells