

Product datasheet for **TA358604**

SFTPA2 Rabbit Polyclonal Antibody

Product data:

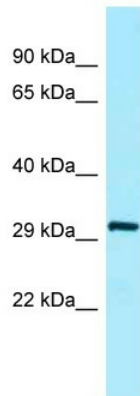
Product Type:	Primary Antibodies
Applications:	WB
Reactivity:	Human
Host:	Rabbit
Clonality:	Polyclonal
Specificity:	Expected reactivity: Cow, Dog, Goat, Guinea Pig, Horse, Human, Mouse, Pig, Rabbit, Rat, Sheep, Zebrafish Homology: Cow: 100%; Dog: 92%; Goat: 91%; Guinea Pig: 86%; Horse: 86%; Human: 100%; Mouse: 86%; Pig: 93%; Rabbit: 86%; Rat: 86%; Sheep: 93%; Zebrafish: 85%
Formulation:	Liquid. Purified antibody supplied in 1x PBS buffer with 0.09% (w/v) sodium azide and 2% sucrose. <i>Note that this product is shipped as lyophilized powder to China customers.</i>
Concentration:	lot specific
Purification:	Affinity Purified
Conjugation:	Unconjugated
Storage:	For short term use, store at 2-8°C up to 1 week. For long term storage, store at -20°C in small aliquots to prevent freeze-thaw cycles.
Stability:	Shelf life: one year from despatch.
Predicted Protein Size:	26kDa
Gene Name:	surfactant protein A2
Database Link:	NP_001092138 Entrez Gene 729238 Human Q8IWL1
Background:	This gene is one of several genes encoding pulmonary-surfactant associated proteins (SFTPA) located on chromosome 10. Mutations in this gene and a highly similar gene located nearby, which affect the highly conserved carbohydrate recognition domain, are associated with idiopathic pulmonary fibrosis. The current version of the assembly displays only a single centromeric SFTPA gene pair rather than the two gene pairs shown in the previous assembly which were thought to have resulted from a duplication.



[View online >](#)

Synonyms:

COLEC5; FLJ50594; FLJ50597; FLJ51953; FLJ79091; FLJ93678; MGC133169; MGC133366; MGC189714; MGC189761; PSAP; PSP-A; PSPA; SFTP1; SFTPA; SP-A; SP-A2; SPA2; SPAlI

Product images:


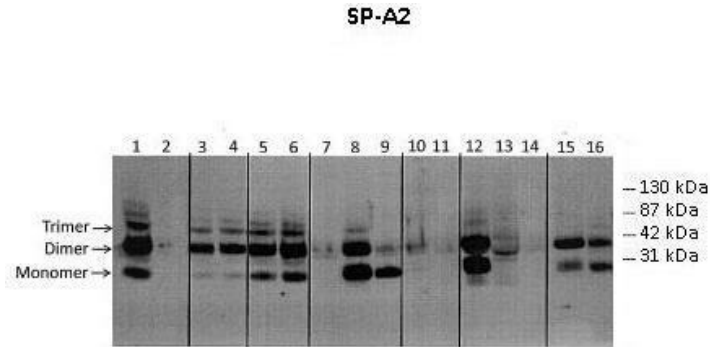
WB Suggested Anti-SFTPA2 Antibody
Titration: 1.0 ug/ml
Positive Control: Fetal Heart

Lanes:

1: 20ng human SP-A2 protein, 2: 20ug rat wt BAL cell lysate, 3: 25ng hSP-A2 (1A0) protein purified from transfected CHO lysate, 4: 25ng hSP-A2 (1A1) protein purified from transfected CHO lysate, 5: 25ng hSP-A1 (6A2) protein purified from transfected CHO lysate, 6: 25ng hSP-A1 (6A4) protein purified from transfected CHO lysate, 7: 25ng hSP-A2/1 (1A0/6A4) protein purified from transfected CHO lysate, 8: 25ng hSP-A2/1 (1A1/6A2) protein purified from transfected CHO lysate, 9: 20ug SP-A KO mouse BAL lysate, 10: 25ng hSP-A2 (1A0) protein purified from transfected mouse BAL lysate, 11: 25ng hSP-A2 (1A1) protein purified from transfected mouse BAL lysate, 12: 25ng hSP-A1 (6A2) protein purified from transfected mouse BAL lysate, 13: 25ng hSP-A1 (6A4) protein purified from transfected mouse BAL lysate, 14: 25ng hSP-A2/1 (1A0/6A2) protein purified from transfected mouse BAL lysate, 15: 25ng mouse SP-A2 protein purified from mouse BAL lysate, 16: 20ug mouse wt BAL lysate, 17: 15ug human wt T2 lysate, 18: 25ng human SP-A2 protein.



See Immunoblot 2 Data and customer Feedback for more Information



See Immunoblot 2 Data and Customer Feedback for more Information

Lanes:

- Lane 1: 25ng purified Human Alveolar sample (w/SP-A1+SP-A2)
 - Lane 1: 25ng purified Human Alveolar sample (w/SP-A1+SP-A2)
 - Lane 2: 20ug Rat bronchoalveolar lavage
 - Lane 3: 25ng hSP-A2 variant expressed in CHO cells
 - Lane 4: 25ng hSP-A2 variant expressed in CHO cells
 - Lane 5: 25ng hSP-A1/A2 variants expressed in CHO cells
 - Lane 6: 25ng hSP-A1/A2 variants expressed in CHO cells
 - Lane 7: 20ug SP-A1/2 KO mouse bronchoalveolar lavage
 - Lane 8: 20ug hSP-A2 variant transgenic mouse bronchoalveolar lavage
 - Lane 9: 20ug hSP-A2 variant transgenic mouse bronchoalveolar lavage
 - Lane 10: 20ug hSP-A1 variant transgenic mouse bronchoalveolar lavage
 - Lane 11: 20ug hSP-A1 variant transgenic mouse bronchoalveolar lavage
 - Lane 12: 20ug hSP-A1/A2 variants transgenic mouse bronchoalveolar lavage
 - Lane 13: 20ug mSP-A1/A2 bronchoalveolar lavage; +/- mouse
 - Lane 14: 20ug mSP-A1/A2 bronchoalveolar lavage; WT mouse
 - Lane 15: 10ug human alveolar cell lysate
 - Lane 16: 25ng purified hSP-A1/A2
- Primary Antibody Dilution:
1:2500
- Secondary Antibody:
IgG HRP Conj
- Secondary Antibody Dilution:
1:10000
- Gene Name:
SFTPA2
- Submitted by:
Todd M. Umstead, Pennsylvania State University
College of Medicine