

## Product datasheet for **TA358600**

### RPS5 Rabbit Polyclonal Antibody

#### Product data:

Product Type:	Primary Antibodies
Applications:	WB
Reactivity:	Human
Host:	Rabbit
Clonality:	Polyclonal
Specificity:	<b>Expected reactivity:</b> Cow, Dog, Human, Pig, Rat <b>Homology:</b> Cow: 100%; Dog: 100%; Human: 100%; Pig: 100%; Rat: 100%
Formulation:	Liquid. Purified antibody supplied in 1x PBS buffer with 0.09% (w/v) sodium azide and 2% sucrose. <i>Note that this product is shipped as lyophilized powder to China customers.</i>
Concentration:	lot specific
Purification:	Affinity Purified
Conjugation:	Unconjugated
Storage:	For short term use, store at 2-8°C up to 1 week. For long term storage, store at -20°C in small aliquots to prevent freeze-thaw cycles.
Stability:	Shelf life: one year from despatch.
Predicted Protein Size:	23kDa
Gene Name:	ribosomal protein S5
Database Link:	<a href="#">NP_001000</a> <a href="#">Entrez Gene 6193 Human</a> <a href="#">P46782</a>



[View online »](#)

**Background:**

Ribosomes, the organelles that catalyze protein synthesis, consist of a small 40S subunit and a large 60S subunit. Together these subunits are composed of 4 RNA species and approximately 80 structurally distinct proteins. This gene encodes a ribosomal protein that is a component of the 40S subunit. The protein belongs to the S7P family of ribosomal proteins. It is located in the cytoplasm. Variable expression of this gene in colorectal cancers compared to adjacent normal tissues has been observed, although no correlation between the level of expression and the severity of the disease has been found. As is typical for genes encoding ribosomal proteins, there are multiple processed pseudogenes of this gene dispersed through the genome.

**Synonyms:**

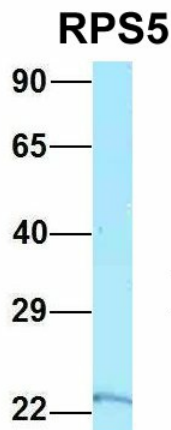
RPS5

**Protein Pathways:**

Ribosome

**Product images:**


WB Suggested Anti-RPS5 Antibody  
 Titration: 1.0 ug/ml  
 Positive Control: HCT15 Whole Cell  
 RPS5 is supported by BioGPS gene expression data to be expressed in HCT15



Rabbit Anti-RPS5  
 Sample Type: Human 293T  
 Antibody Concentration: 1ug/mL

Host: Rabbit  
 Target Name: RPS5  
 Sample Type: 293T  
 Antibody Dilution: 1.0ug/mL  
 RPS5 is supported by BioGPS gene expression data to be expressed in HEK293T