

Product datasheet for **TA358597**

kynurenine 3 monooxygenase (KMO) Rabbit Polyclonal Antibody

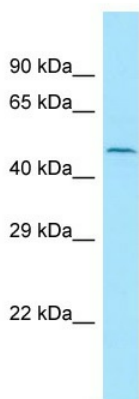
Product data:

Product Type:	Primary Antibodies
Applications:	WB
Reactivity:	Human
Host:	Rabbit
Clonality:	Polyclonal
Specificity:	Expected reactivity: Dog, Horse, Human, Mouse, Rabbit, Rat Homology: Dog: 79%; Horse: 79%; Human: 100%; Mouse: 90%; Rabbit: 79%; Rat: 79%
Formulation:	Liquid. Purified antibody supplied in 1x PBS buffer with 0.09% (w/v) sodium azide and 2% sucrose. <i>Note that this product is shipped as lyophilized powder to China customers.</i>
Concentration:	lot specific
Purification:	Affinity Purified
Conjugation:	Unconjugated
Storage:	For short term use, store at 2-8°C up to 1 week. For long term storage, store at -20°C in small aliquots to prevent freeze-thaw cycles.
Stability:	Shelf life: one year from despatch.
Predicted Protein Size:	56kDa
Gene Name:	kynurenine 3-monooxygenase (kynurenine 3-hydroxylase)
Database Link:	NP_003670 Entrez Gene 8564 Human O15229
Background:	This gene encodes a mitochondrion outer membrane protein that catalyzes the hydroxylation of L-tryptophan metabolite, L-kynurenine, to form L-3-hydroxykynurenine. Studies in yeast identified this gene as a therapeutic target for Huntington disease.
Synonyms:	dj317G22.1
Protein Families:	Druggable Genome
Protein Pathways:	Metabolic pathways, Tryptophan metabolism

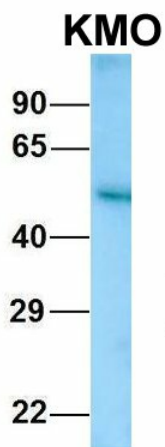


[View online »](#)

Product images:



WB Suggested Anti-KMO Antibody
 Titration: 1.0 ug/ml
 Positive Control: OVCAR-3 Whole Cell
 There is BioGPS gene expression data showing that KMO is expressed in OVCAR3



Rabbit Anti-KMO
 Sample Type: Human Fetal Kidney
 Antibody Concentration: 1ug/mL

Host: Rabbit
 Target Name: KMO
 Sample Type: Human Fetal Kidney
 Antibody Dilution: 1.0ug/ml



Host: Rabbit
Target Name: KMO
Sample Type: HepG2 Cell Lysate
Antibody Dilution: 1.0 μ g/ml

Host: Rabbit
Target Name: KMO
Sample Tissue: Human HepG2 Whole Cell
Antibody Dilution: 1 μ g/ml