

Product datasheet for **TA358591**

Glucosidase 2 subunit beta (PRKCSH) Rabbit Polyclonal Antibody

Product data:

Product Type:	Primary Antibodies
Applications:	WB
Reactivity:	Human
Host:	Rabbit
Clonality:	Polyclonal
Specificity:	Expected reactivity: Dog, Guinea Pig, Horse, Human, Mouse, Rat, Yeast, Zebrafish Homology: Dog: 86%; Guinea Pig: 92%; Horse: 86%; Human: 100%; Mouse: 77%; Rat: 92%; Yeast: 75%; Zebrafish: 86%
Formulation:	Liquid. Purified antibody supplied in 1x PBS buffer with 0.09% (w/v) sodium azide and 2% sucrose. <i>Note that this product is shipped as lyophilized powder to China customers.</i>
Concentration:	lot specific
Purification:	Affinity Purified
Conjugation:	Unconjugated
Storage:	For short term use, store at 2-8°C up to 1 week. For long term storage, store at -20°C in small aliquots to prevent freeze-thaw cycles.
Stability:	Shelf life: one year from despatch.
Predicted Protein Size:	59kDa
Gene Name:	protein kinase C substrate 80K-H
Database Link:	NP_002734 Entrez Gene 5589 Human P14314
Background:	This gene encodes the beta-subunit of glucosidase II, an N-linked glycan-processing enzyme in the endoplasmic reticulum (ER). This protein is an acidic phospho-protein known to be a substrate for protein kinase C. Mutations in this gene have been associated with the autosomal dominant polycystic liver disease (PCLD). Alternatively spliced transcript variants encoding distinct isoforms have been observed.
Synonyms:	AGE-R2; G19P1; hepatocystin; PCLD; PKCSH; PLD1



[View online »](#)

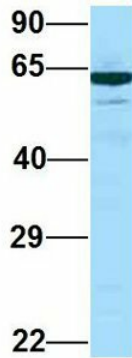
Protein Families: Druggable Genome

Product images:



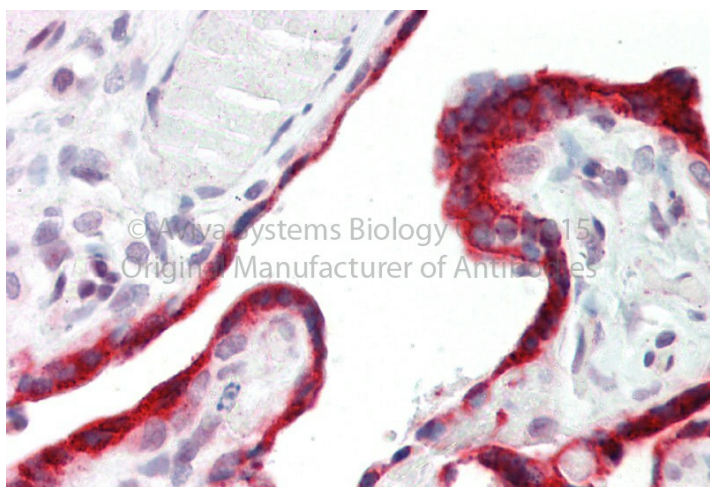
WB Suggested Anti-PRKCSH Antibody
 Titration: 1.0 ug/ml
 Positive Control: RPMI-8226 Whole Cell. PRKCSH is strongly supported by BioGPS gene expression data to be expressed in RPMI-8226

PRKCSH



Rabbit Anti-PRKCSH
 Sample Type: Human HeLa
 Antibody Concentration: 1ug/mL

Host: Rabbit
 Target Name: PRKCSH
 Sample Type: Human HeLa
 Antibody Dilution: 1.0ug/ml PRKCSH is supported by BioGPS gene expression data to be expressed in HeLa



Rabbit Anti-PRKCSH antibody
Catalog Number: ARP64008
Formalin Fixed Paraffin Embedded Tissue:
Human Adult Placenta
Observed Staining: Cytoplasm in hepatocytes
Primary Antibody Concentration: 1:600
Secondary Antibody: Donkey anti-Rabbit-Cy3
Secondary Antibody Concentration: 1:200
Magnification: 20X
Exposure Time: 0.5-2.0 sec