

## Product datasheet for **TA358590**

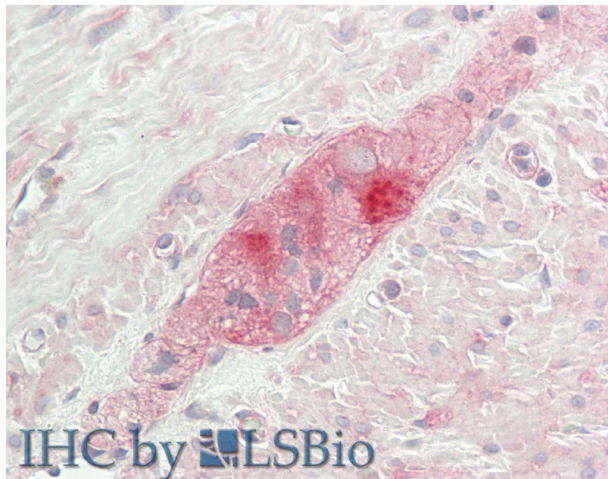
### gamma Synuclein (SNCG) Rabbit Polyclonal Antibody

#### Product data:

Product Type:	Primary Antibodies
Applications:	IHC
Reactivity:	Human
Host:	Rabbit
Clonality:	Polyclonal
Immunogen:	The immunogen is a synthetic peptide directed towards the following sequence GFSIAKEGVVGAVEKTKQGVTAAEKTKEGVMYVGAKTKENVVQSVTSVA
Specificity:	<b>Expected reactivity:</b> Cow, Dog, Guinea Pig, Horse, Human, Mouse, Pig, Rabbit, Rat, Sheep, Zebrafish <b>Homology:</b> Cow: 100%; Dog: 100%; Guinea Pig: 86%; Horse: 100%; Human: 100%; Mouse: 100%; Pig: 100%; Rabbit: 100%; Rat: 100%; Sheep: 86%; Zebrafish: 79%
Formulation:	Liquid. Purified antibody supplied in 1x PBS buffer with 0.09% (w/v) sodium azide and 2% sucrose.
Concentration:	lot specific
Purification:	Affinity Purified
Conjugation:	Unconjugated
Storage:	For short term use, store at 2-8°C up to 1 week. For long term storage, store at -20°C in small aliquots to prevent freeze-thaw cycles.
Stability:	Shelf life: one year from despatch.
Predicted Protein Size:	13 kDa
Gene Name:	synuclein gamma
Database Link:	<a href="#">NP_003078</a> <a href="#">Entrez Gene 6623 Human</a> <a href="#">O76070</a>
Background:	This gene encodes a member of the synuclein family of proteins which are believed to be involved in the pathogenesis of neurodegenerative diseases. Mutations in this gene have also been associated with breast tumor development.
Synonyms:	BCSG1; PERSYN; PRSN; SR; Synoretin



[View online »](#)

**Product images:**

Rabbit Anti-SNCG antibody  
Catalog Number: ARP64004  
Formalin Fixed Paraffin Embedded Tissue:  
Human Small Intestine, Myenteric Plexus  
Primary antibody Concentration: 1:100  
Secondary Antibody: Donkey anti-Rabbit-Cy3  
Secondary Antibody Concentration: 1:200  
Magnification: 20x  
Exposure Time: 0.5-2.0sec