

## Product datasheet for **TA358583**

### SF20 (MYDGF) Rabbit Polyclonal Antibody

#### Product data:

Product Type:	Primary Antibodies
Applications:	IHC, WB
Reactivity:	Human
Host:	Rabbit
Clonality:	Polyclonal
Specificity:	<b>Expected reactivity:</b> Cow, Dog, Horse, Human, Mouse, Pig, Rat <b>Homology:</b> Cow: 100%; Dog: 100%; Horse: 100%; Human: 100%; Mouse: 93%; Pig: 100%; Rat: 100%
Formulation:	Liquid. Purified antibody supplied in 1x PBS buffer with 0.09% (w/v) sodium azide and 2% sucrose. <i>Note that this product is shipped as lyophilized powder to China customers.</i>
Concentration:	lot specific
Purification:	Affinity Purified
Conjugation:	Unconjugated
Storage:	For short term use, store at 2-8°C up to 1 week. For long term storage, store at -20°C in small aliquots to prevent freeze-thaw cycles.
Stability:	Shelf life: one year from despatch.
Predicted Protein Size:	19kDa
Gene Name:	myeloid-derived growth factor
Database Link:	<a href="#">NP_061980</a> <a href="#">Entrez Gene 56005 Human</a> <a href="#">Q969H8</a>
Background:	The protein encoded by this gene was previously thought to support proliferation of lymphoid cells and was considered an interleukin. However, this activity has not been reproducible and the function of this protein is currently unknown.
Protein Families:	Secreted Protein

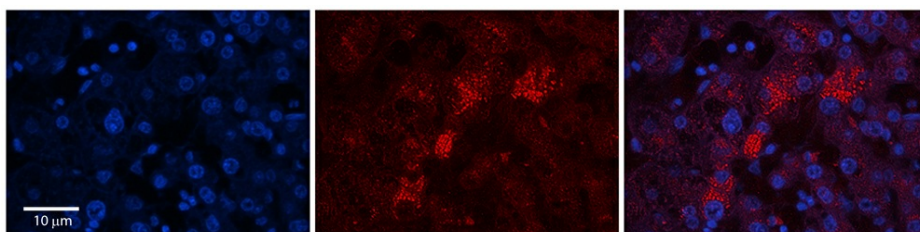


[View online »](#)

## Product images:



Host: Rabbit  
Target Name: C19orf10  
Antibody Dilution: 1.0ug/ml  
Sample Type: Human Placenta



Rabbit Anti-C19orf10 Antibody  
Catalog Number: TA358583  
Formalin Fixed Paraffin Embedded Tissue:  
Human Adult Liver  
Observed Staining: Cytoplasm in hepatocytes,  
moderate tissue distribution, resemble Golgi  
structures  
Primary Antibody Concentration: 1:100  
Secondary Antibody: Donkey anti-Rabbit-Cy3  
Secondary Antibody Concentration: 1:200  
Magnification: 20X  
Exposure Time: 0.5–2.0 sec  
Protocol located in Reviews and Data.