

## Product datasheet for **TA358581**

### PICALM Rabbit Polyclonal Antibody

#### Product data:

Product Type:	Primary Antibodies
Applications:	IHC, WB
Reactivity:	Human
Host:	Rabbit
Clonality:	Polyclonal
Specificity:	<b>Expected reactivity:</b> Cow, Dog, Guinea Pig, Horse, Human, Mouse, Rabbit, Rat, Zebrafish <b>Homology:</b> Cow: 100%; Dog: 100%; Guinea Pig: 100%; Horse: 100%; Human: 100%; Mouse: 93%; Rabbit: 100%; Rat: 100%; Zebrafish: 86%
Formulation:	Liquid. Purified antibody supplied in 1x PBS buffer with 0.09% (w/v) sodium azide and 2% sucrose. <i>Note that this product is shipped as lyophilized powder to China customers.</i>
Concentration:	lot specific
Purification:	Affinity Purified
Conjugation:	Unconjugated
Storage:	For short term use, store at 2-8°C up to 1 week. For long term storage, store at -20°C in small aliquots to prevent freeze-thaw cycles.
Stability:	Shelf life: one year from despatch.
Predicted Protein Size:	60kDa
Gene Name:	phosphatidylinositol binding clathrin assembly protein
Database Link:	<a href="#">NP_001193876</a> <a href="#">Entrez Gene 8301 Human</a> <a href="#">E9PN05</a>



[View online »](#)

**Background:**

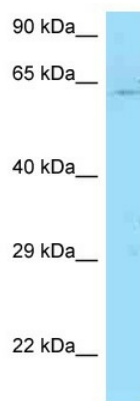
This gene encodes a clathrin assembly protein, which recruits clathrin and adaptor protein complex 2 (AP2) to cell membranes at sites of coated-pit formation and clathrin-vesicle assembly. The protein may be required to determine the amount of membrane to be recycled, possibly by regulating the size of the clathrin cage. The protein is involved in AP2-dependent clathrin-mediated endocytosis at the neuromuscular junction. A chromosomal translocation t(10;11)(p13;q14) leading to the fusion of this gene and the MLLT10 gene is found in acute lymphoblastic leukemia, acute myeloid leukemia and malignant lymphomas. The polymorphisms of this gene are associated with the risk of Alzheimer disease.

**Synonyms:**

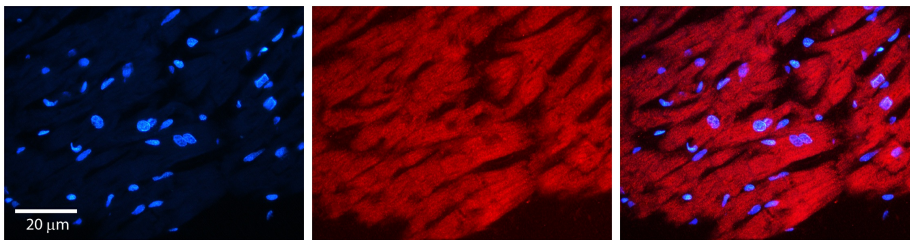
CALM; CLTH; LAP

**Protein Families:**

Druggable Genome

**Product images:**


WB Suggested Anti-PICALM Antibody  
Titration: 1.0 ug/ml  
Positive Control: Jurkat Whole Cell



Rabbit Anti-PICALM Antibody  
Catalog Number: TA358581  
Formalin Fixed Paraffin Embedded Tissue:  
Human heart Tissue  
Observed Staining: Cytoplasmic  
Primary Antibody Concentration: 1:100  
Other Working Concentrations: N/A  
Secondary Antibody: Donkey anti-Rabbit-Cy3  
Secondary Antibody Concentration: 1:200  
Magnification: 20X  
Exposure Time: 0.5–2.0 sec