

Product datasheet for **TA358571**

ROR1 Rabbit Polyclonal Antibody

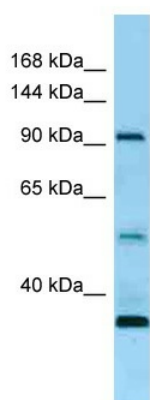
Product data:

Product Type:	Primary Antibodies
Applications:	WB
Reactivity:	Human
Host:	Rabbit
Clonality:	Polyclonal
Specificity:	Expected reactivity: Dog, Guinea Pig, Horse, Human, Mouse, Rabbit, Rat Homology: Dog: 93%; Guinea Pig: 93%; Horse: 93%; Human: 100%; Mouse: 93%; Rabbit: 93%; Rat: 93%
Formulation:	Liquid. Purified antibody supplied in 1x PBS buffer with 0.09% (w/v) sodium azide and 2% sucrose. <i>Note that this product is shipped as lyophilized powder to China customers.</i>
Concentration:	lot specific
Purification:	Affinity Purified
Conjugation:	Unconjugated
Storage:	For short term use, store at 2-8°C up to 1 week. For long term storage, store at -20°C in small aliquots to prevent freeze-thaw cycles.
Stability:	Shelf life: one year from despatch.
Predicted Protein Size:	104kDa
Gene Name:	receptor tyrosine kinase-like orphan receptor 1
Database Link:	NP_005003 Entrez Gene 4919 Human Q01973
Background:	The protein encoded by this gene is a receptor protein tyrosine kinase that modulates neurite growth in the central nervous system. It is a type I membrane protein and belongs to the ROR subfamily of cell surface receptors. Alternative splicing results in multiple transcript variants encoding different isoforms.
Synonyms:	dj537F10.1; MGC99659; NTRKR1
Protein Families:	Druggable Genome, Protein Kinase, Transmembrane



[View online »](#)

Product images:



WB Suggested Anti-ROR1 Antibody
Titration: 1.0 ug/ml
Positive Control: Fetal Heart