

Product datasheet for **TA358570**

LILRB2 Rabbit Polyclonal Antibody

Product data:

Product Type:	Primary Antibodies
Applications:	WB
Reactivity:	Human
Host:	Rabbit
Clonality:	Polyclonal
Specificity:	Expected reactivity: Human Homology: Human: 100%
Formulation:	Liquid. Purified antibody supplied in 1x PBS buffer with 0.09% (w/v) sodium azide and 2% sucrose. <i>Note that this product is shipped as lyophilized powder to China customers.</i>
Concentration:	lot specific
Purification:	Affinity Purified
Conjugation:	Unconjugated
Storage:	For short term use, store at 2-8°C up to 1 week. For long term storage, store at -20°C in small aliquots to prevent freeze-thaw cycles.
Stability:	Shelf life: one year from despatch.
Predicted Protein Size:	65kDa
Gene Name:	leukocyte immunoglobulin like receptor B2
Database Link:	NP_005865 Entrez Gene 10288 Human Q8N423



[View online »](#)

Background:

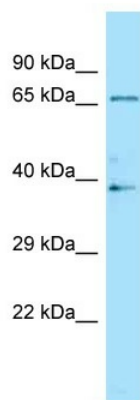
This gene is a member of the leukocyte immunoglobulin-like receptor (LIR) family, which is found in a gene cluster at chromosomal region 19q13.4. The encoded protein belongs to the subfamily B class of LIR receptors which contain two or four extracellular immunoglobulin domains, a transmembrane domain, and two to four cytoplasmic immunoreceptor tyrosine-based inhibitory motifs (ITIMs). The receptor is expressed on immune cells where it binds to MHC class I molecules on antigen-presenting cells and transduces a negative signal that inhibits stimulation of an immune response. It is thought to control inflammatory responses and cytotoxicity to help focus the immune response and limit autoreactivity. Multiple transcript variants encoding different isoforms have been found for this gene.

Synonyms:

CD85D; ILT-4; ILT4; LILRA6; LIR-2; LIR2; MIR-10; MIR10; OTTHUMP00000067358

Protein Families:

Transmembrane

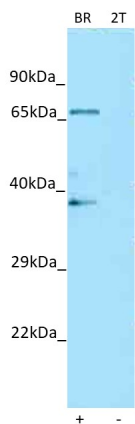
Product images:


WB Suggested Anti-LILRB2 Antibody
Titration: 1.0 ug/ml
Positive Control: Fetal Brain



Host: Rabbit
Target Name: LILRB2
Sample Type: HepG2 Cell Lysate
Antibody Dilution: 1.0µg/ml

Host: Rabbit
Target Name: LILRB2
Sample Tissue: Human HepG2 Whole Cell
Antibody Dilution: 1ug/ml



Host: Rabbit
 Target name: LILRB2
 Positive control: ~25ug Human Brain (BR)
 Negative control: ~25ug 293T Cell Lysate (2T)
 Antibody concentration: 1ug/ml

Host: Rabbit
 Target: LILRB2
 Positive control (+): Human brain (BR)
 Negative control (-): 293T (2T)
 Antibody concentration: 1ug/ml