

Product datasheet for **TA358566**

RP9 Rabbit Polyclonal Antibody

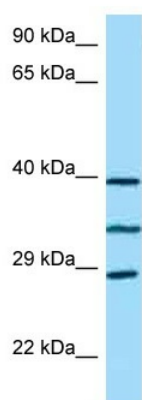
Product data:

Product Type:	Primary Antibodies
Applications:	WB
Reactivity:	Human
Host:	Rabbit
Clonality:	Polyclonal
Specificity:	Expected reactivity: Cow, Dog, Horse, Human, Mouse, Pig, Rat Homology: Cow: 92%; Dog: 86%; Horse: 86%; Human: 100%; Mouse: 79%; Pig: 93%; Rat: 79%
Formulation:	Liquid. Purified antibody supplied in 1x PBS buffer with 0.09% (w/v) sodium azide and 2% sucrose.
Concentration:	lot specific
Purification:	Affinity Purified
Conjugation:	Unconjugated
Storage:	For short term use, store at 2-8°C up to 1 week. For long term storage, store at -20°C in small aliquots to prevent freeze-thaw cycles.
Stability:	Shelf life: one year from despatch.
Predicted Protein Size:	26kDa
Gene Name:	retinitis pigmentosa 9 (autosomal dominant)
Database Link:	NP_976033 Entrez Gene 6100 Human Q8TA86
Background:	The protein encoded by this gene can be bound and phosphorylated by the protooncogene PIM1 product, a serine/threonine protein kinase . This protein localizes in nuclear speckles containing the splicing factors, and has a role in pre-mRNA splicing. CBF1-interacting protein (CIR), a corepressor of CBF1, can also bind to this protein and effects alternative splicing. Mutations in this gene result in autosomal dominant retinitis pigmentosa-9. This gene has a pseudogene (GeneID: 441212), which is located in tandem array approximately 166 kb distal to this gene.
Synonyms:	PAP-1



[View online »](#)

Product images:



WB Suggested Anti-RP9 Antibody
 Titration: 1.0 ug/ml
 Positive Control: RPMI-8226 Whole Cell