

Product datasheet for **TA358562**

QK1 (QKI) Rabbit Polyclonal Antibody

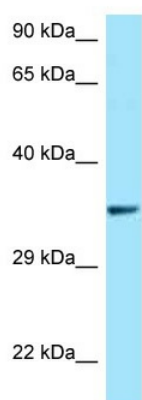
Product data:

Product Type:	Primary Antibodies
Applications:	WB
Reactivity:	Human
Host:	Rabbit
Clonality:	Polyclonal
Specificity:	Expected reactivity: Cow, Dog, Guinea Pig, Horse, Human, Mouse, Rabbit, Rat, Zebrafish Homology: Cow: 100%; Dog: 100%; Guinea Pig: 100%; Horse: 100%; Human: 100%; Mouse: 100%; Rabbit: 100%; Rat: 100%; Zebrafish: 93%
Formulation:	Liquid. Purified antibody supplied in 1x PBS buffer with 0.09% (w/v) sodium azide and 2% sucrose. <i>Note that this product is shipped as lyophilized powder to China customers.</i>
Concentration:	lot specific
Purification:	Affinity Purified
Conjugation:	Unconjugated
Storage:	For short term use, store at 2-8°C up to 1 week. For long term storage, store at -20°C in small aliquots to prevent freeze-thaw cycles.
Stability:	Shelf life: one year from despatch.
Predicted Protein Size:	35kDa
Gene Name:	QKI, KH domain containing, RNA binding
Database Link:	NP_996735 Entrez Gene 9444 Human Q96PU8
Background:	The protein encoded by this gene is an RNA-binding protein that regulates pre-mRNA splicing, export of mRNAs from the nucleus, protein translation, and mRNA stability. The encoded protein is involved in myelination and oligodendrocyte differentiation and may play a role in schizophrenia. Four transcript variants encoding different isoforms have been found for this gene.
Synonyms:	DKFZp586I0923; HKQ; Hqk; Hqkl; QK; QK1; QK3



[View online »](#)

Product images:



WB Suggested Anti-QKI Antibody
Titration: 1.0 ug/ml
Positive Control: HeLa Whole Cell
There is BioGPS gene expression data showing that QKI is expressed in HeLa