

## Product datasheet for **TA358553**

### CAP2 Rabbit Polyclonal Antibody

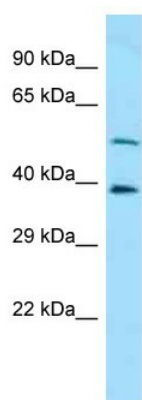
#### Product data:

Product Type:	Primary Antibodies
Applications:	WB
Reactivity:	Human
Host:	Rabbit
Clonality:	Polyclonal
Specificity:	<b>Expected reactivity:</b> Dog, Guinea Pig, Horse, Human, Mouse, Rabbit, Rat, Yeast <b>Homology:</b> Dog: 86%; Guinea Pig: 86%; Horse: 86%; Human: 100%; Mouse: 86%; Rabbit: 86%; Rat: 93%; Yeast: 81%
Formulation:	Liquid. Purified antibody supplied in 1x PBS buffer with 0.09% (w/v) sodium azide and 2% sucrose. <i>Note that this product is shipped as lyophilized powder to China customers.</i>
Concentration:	lot specific
Purification:	Affinity Purified
Conjugation:	Unconjugated
Storage:	For short term use, store at 2-8°C up to 1 week. For long term storage, store at -20°C in small aliquots to prevent freeze-thaw cycles.
Stability:	Shelf life: one year from despatch.
Predicted Protein Size:	53kDa
Gene Name:	CAP, adenylate cyclase-associated protein, 2 (yeast)
Database Link:	<a href="#">NP_006357</a> <a href="#">Entrez Gene 10486 Human</a> <a href="#">P40123</a>
Background:	This gene was identified by its similarity to the gene for human adenylyl cyclase-associated protein. The function of the protein encoded by this gene is unknown. However, the protein appears to be able to interact with adenylyl cyclase-associated protein and actin.
Synonyms:	2810452G09Rik; PI8; SERPINB8



[View online »](#)

Product images:



WB Suggested Anti-CAP2 Antibody  
Titration: 1.0 ug/ml  
Positive Control: 721\_B Whole Cell