

Product datasheet for **TA358552**

BAP1 Rabbit Polyclonal Antibody

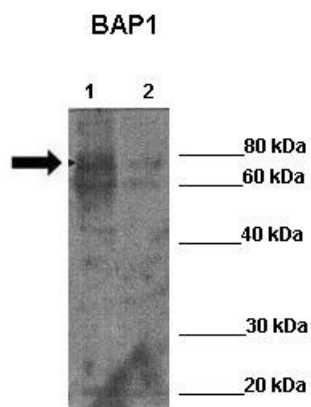
Product data:

Product Type:	Primary Antibodies
Applications:	WB
Reactivity:	Zebrafish
Host:	Rabbit
Clonality:	Polyclonal
Specificity:	Expected reactivity: Cow, Dog, Guinea Pig, Horse, Human, Mouse, Rabbit, Rat, Zebrafish Homology: Cow: 100%; Dog: 100%; Guinea Pig: 100%; Horse: 100%; Human: 100%; Mouse: 100%; Rabbit: 100%; Rat: 100%; Zebrafish: 100%
Formulation:	Liquid. Purified antibody supplied in 1x PBS buffer with 0.09% (w/v) sodium azide and 2% sucrose. <i>Note that this product is shipped as lyophilized powder to China customers.</i>
Concentration:	lot specific
Purification:	Affinity Purified
Conjugation:	Unconjugated
Storage:	For short term use, store at 2-8°C up to 1 week. For long term storage, store at -20°C in small aliquots to prevent freeze-thaw cycles.
Stability:	Shelf life: one year from despatch.
Predicted Protein Size:	80kDa
Gene Name:	BRCA1 associated protein 1
Database Link:	NP_004647 Entrez Gene 8314 Human Q92560
Background:	The protein encoded by this gene localizes to the nucleus and it interacts with the RING finger domain of the breast cancer 1, early onset protein (BRCA1). This gene is thought to be a tumor suppressor gene that functions in the BRCA1 growth control pathway. There are multiple polyadenylation sites found in this gene.
Synonyms:	DKFZp686N04275; FLJ35406; FLJ37180; hucep-6; HUCEP-13; KIAA0272; UCHL2
Protein Families:	Druggable Genome, Protease



[View online »](#)

Product images:



WB Suggested Anti-BAP1 Antibody
Positive Control: Lane 1: 30ug Zebrafish skin lysate Lane 2: 30ug Zebrafish liver lysate
Primary Antibody Dilution : 1:1000
Secondary Antibody : Anti-rabbit-HRP
Secondary Antibody Dilution : 1:4000
Submitted by: William Tse