

Product datasheet for **TA358549**

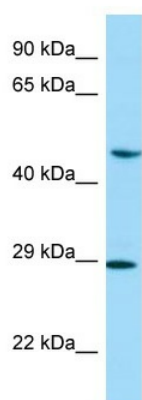
NEIL1 Rabbit Polyclonal Antibody

Product data:

Product Type:	Primary Antibodies
Applications:	WB
Reactivity:	Human
Host:	Rabbit
Clonality:	Polyclonal
Specificity:	Expected reactivity: Human, Pig Homology: Human: 100%; Pig: 92%
Formulation:	Liquid. Purified antibody supplied in 1x PBS buffer with 0.09% (w/v) sodium azide and 2% sucrose. <i>Note that this product is shipped as lyophilized powder to China customers.</i>
Concentration:	lot specific
Purification:	Affinity Purified
Conjugation:	Unconjugated
Storage:	For short term use, store at 2-8°C up to 1 week. For long term storage, store at -20°C in small aliquots to prevent freeze-thaw cycles.
Stability:	Shelf life: one year from despatch.
Predicted Protein Size:	44kDa
Gene Name:	nei like DNA glycosylase 1
Database Link:	NP_078884 Entrez Gene 79661 Human Q96FI4
Background:	NEIL1 belongs to a class of DNA glycosylases homologous to the bacterial Fpg/Nei family. These glycosylases initiate the first step in base excision repair by cleaving bases damaged by reactive oxygen species and introducing a DNA strand break via the associated lyase reaction.
Synonyms:	FLJ22402; FPG1; hFPG1; NEH1; NEI1
Protein Families:	Druggable Genome
Protein Pathways:	Base excision repair



[View online »](#)

Product images:

WB Suggested Anti-NEIL1 Antibody
Titration: 1.0 ug/ml
Positive Control: PANC1 Whole Cell
NEIL1 is supported by BioGPS gene expression data to be expressed in PANC1