

Product datasheet for **TA358542**

FPR1 Rabbit Polyclonal Antibody

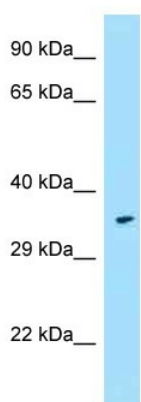
Product data:

Product Type:	Primary Antibodies
Applications:	WB
Reactivity:	Human
Host:	Rabbit
Clonality:	Polyclonal
Specificity:	Expected reactivity: Human, Mouse, Rat Homology: Human: 100%; Mouse: 82%; Rat: 82%
Formulation:	Liquid. Purified antibody supplied in 1x PBS buffer with 0.09% (w/v) sodium azide and 2% sucrose. <i>Note that this product is shipped as lyophilized powder to China customers.</i>
Concentration:	lot specific
Purification:	Affinity Purified
Conjugation:	Unconjugated
Storage:	For short term use, store at 2-8°C up to 1 week. For long term storage, store at -20°C in small aliquots to prevent freeze-thaw cycles.
Stability:	Shelf life: one year from despatch.
Predicted Protein Size:	38kDa
Gene Name:	formyl peptide receptor 1
Database Link:	NP_002020 Entrez Gene 2357 Human P21462
Background:	This gene encodes a G protein-coupled receptor of mammalian phagocytic cells that is a member of the G-protein coupled receptor 1 family. The protein mediates the response of phagocytic cells to invasion of the host by microorganisms and is important in host defense and inflammation.
Synonyms:	FMLP; FPR
Protein Families:	Druggable Genome, GPCR, Transmembrane
Protein Pathways:	Neuroactive ligand-receptor interaction

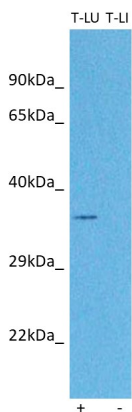


[View online »](#)

Product images:



WB Suggested Anti-FPR1 Antibody
Titration: 1.0 ug/ml
Positive Control: Fetal Heart



Host: Rabbit
Target name: FPR1
Positive control: ~25ug Human Lung Tumor (T-LU)
Negative control: ~25ug Human Liver Tumor (T-LI)
Antibody concentration: 3ug/ml

Host: Rabbit
Target: FPR1
Positive control (+): Human lung (LU)
Negative control (-): Human liver (LI)
Antibody concentration: 3ug/ml