

Product datasheet for **TA358540**

GnRH (GNRH1) Rabbit Polyclonal Antibody

Product data:

Product Type:	Primary Antibodies
Applications:	IHC
Reactivity:	Human
Host:	Rabbit
Clonality:	Polyclonal
Immunogen:	The immunogen is a synthetic peptide directed towards the following sequence CSSQHWSYGLRPGGKRDAENLIDSFQEIVKEVGQLAETQRFECTTHQPRS
Specificity:	Expected reactivity: Cow, Dog, Guinea Pig, Horse, Human, Mouse, Pig, Rabbit, Rat, Sheep Homology: Cow: 93%; Dog: 92%; Guinea Pig: 77%; Horse: 86%; Human: 100%; Mouse: 85%; Pig: 93%; Rabbit: 93%; Rat: 92%; Sheep: 86%
Formulation:	Liquid. Purified antibody supplied in 1x PBS buffer with 0.09% (w/v) sodium azide and 2% sucrose.
Concentration:	lot specific
Purification:	Affinity Purified
Conjugation:	Unconjugated
Storage:	For short term use, store at 2-8°C up to 1 week. For long term storage, store at -20°C in small aliquots to prevent freeze-thaw cycles.
Stability:	Shelf life: one year from despatch.
Predicted Protein Size:	10 kDa
Gene Name:	gonadotropin releasing hormone 1
Database Link:	NP_000816 Entrez Gene 2796 Human P01148



[View online »](#)

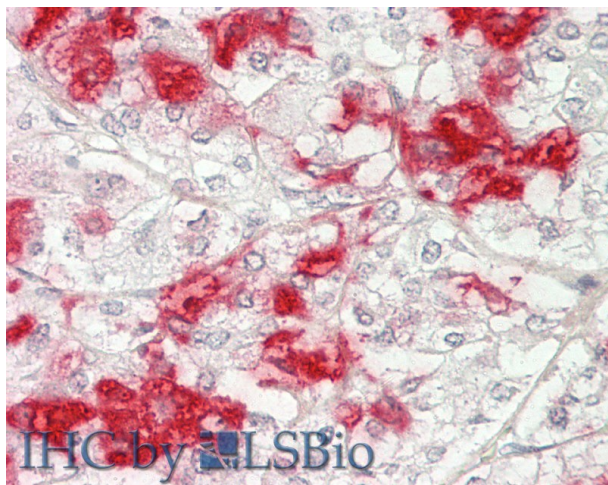
Background: The protein encoded by this gene is secreted and then cleaved to form the 10 aa luteinizing hormone-releasing hormone (LHRH, also known as gonadoliberein-1), and prolactin release-inhibiting factor (also known as GnRH-associated peptide 1). LHRH stimulates the release of luteinizing and follicle stimulating hormones, which are important for reproduction. Mutation in this gene are associated with hypogonadotropic hypogonadism. Alternatively spliced transcript variants have been described for this gene.

Synonyms: GNRH; GRH; LHRH; LNRH

Protein Families: Druggable Genome, Secreted Protein

Protein Pathways: GnRH signaling pathway

Product images:



Rabbit Anti-GNRH1 antibody
Catalog Number: ARP63800
Formalin Fixed Paraffin Embedded Tissue:
Human Adrenal
Primary antibody Concentration: 1:100
Secondary Antibody: Donkey anti-Rabbit-Cy3
Secondary Antibody Concentration: 1:200
Magnification: 20x
Exposure Time: 0.5-2.0sec